



## ARDEN PARK - PLAN M2377A2F-0DB

Total Area: 3281 sq. ft.  
Garage Area: 446 sq. ft.  
Garage Area: 446 sq. ft.  
Garage Size: 2  
Stories: 3  
Bedrooms: 4  
Full Baths: 3  
Half Baths: 1  
Width: 40'-0"  
Depth: 69'-0"  
Height: 27'-0"  
Foundation: Daylight Basement



## ARDEN PARK - PLAN M2377A2F-0DB

### MAIN FLOOR





## ARDEN PARK - PLAN M2377A2F-0DB

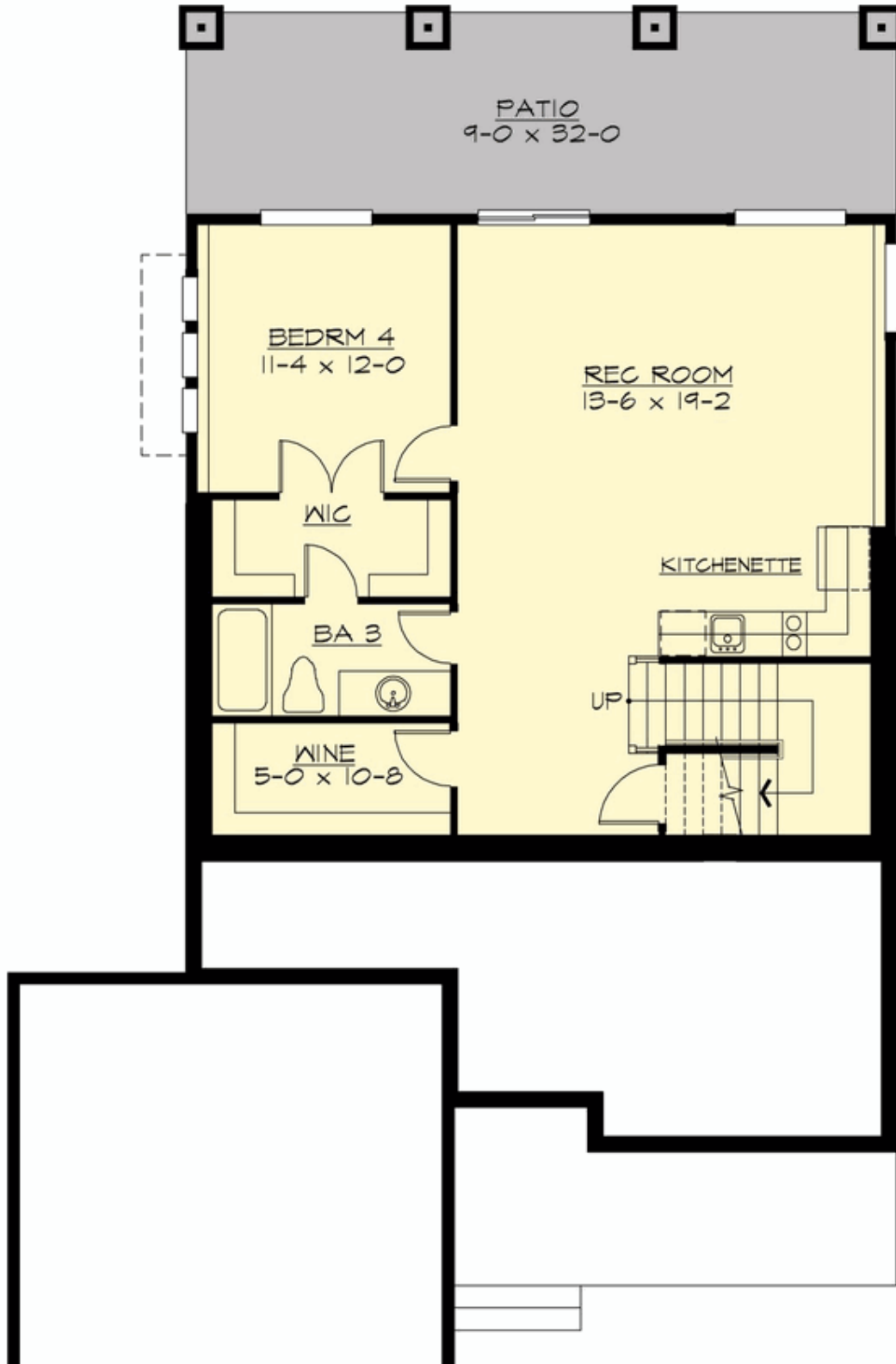
### UPPER FLOOR





## ARDEN PARK - PLAN M2377A2F-0DB

### LOWER FLOOR







## ARDEN PARK - PLAN M2377A2F-0DB

### PLAN DETAILS

#### Area Summary

Total Area:	3281 sq. ft.
Main Floor:	1241 sq. ft.
Upper Floor:	1117 sq. ft.
Lower Floor:	923 sq. ft.
Garage Floor:	446 sq. ft.

#### General Information

Stories:	3
Width:	40'-0"
Depth:	69'-0"
Height:	27'-0"

#### Architectural Style

Bungalow  
Cottage  
Craftsman

#### Number of Rooms

Bedrooms:	4
Full Baths:	3
Half Baths:	1

#### Garage

Garage Size:	2
Garage Door Location:	Front

#### Roof Pitches

Primary:	9:12
----------	------

#### Wall Heights

Main:	9'-0"
Upper:	8'-0"
3rd Floor:	0'-0"
Lower:	9'-0"

#### Foundation Type

Daylight Basement

#### Roof Framing

Trusses

#### Floor Load

Live (lbs):	40 PSF
Dead (lbs):	10 PSF

#### Roof Load

Live (lbs):	25 PSF
Dead (lbs):	15 PSF
Wind:	85 MPH

#### Design Features

- Bonus Space @ Lower Floor
- Den/Office
- Front Porch
- Great Room
- Laundry Room @ Upper Floor
- Master Bedroom @ Upper Floor Rear
- Narrow Lot
- Small Plan