



## CEDAR CREST - PLAN M4100A3S-0

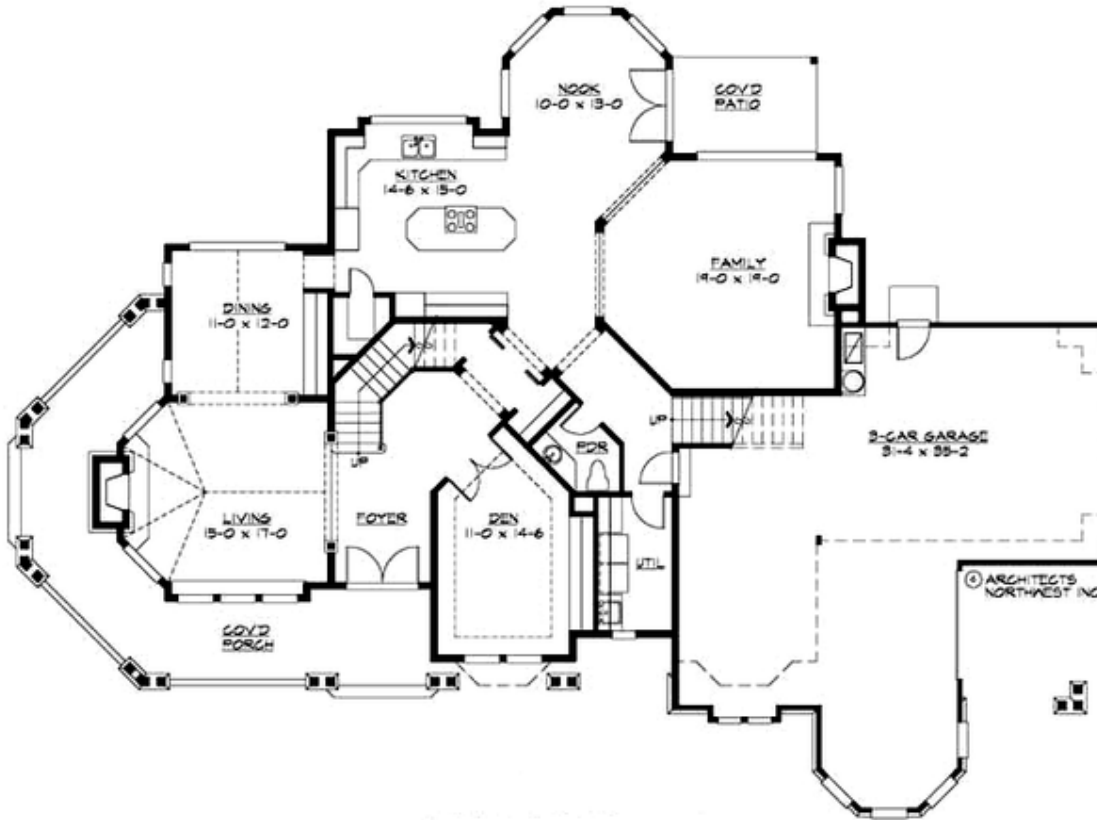
Total Area: 4100 sq. ft.  
Garage Area: 975 sq. ft.  
Garage Area: 975 sq. ft.  
Garage Size: 3  
Stories: 2  
Bedrooms: 4  
Full Baths: 3  
Half Baths: 1  
Width: 90'-0"  
Depth: 67'-0"  
Height: 32'-0"  
Foundation: Crawl Space



***Perfect for a Forest of Fairway Lot.*** A Craftsman masterpiece, the Cedar Crest is perfect for a forest or fairway lot. Its wrap-around porch adds warmth to the facade and is a great place to watch the world go by. A side-entry garage and decorative shop bay enhance its award-winning curb appeal, recognized as Best Published Plan at the 2007 AIBD Design Competition. The popular family living layout features vaulted formal living and dining rooms off the volume foyer, complemented by a spacious informal living area with a covered patio that is ideal for outdoor dining. The angled front stair leads directly to the luxury master suite with its private sitting room and grand bath. A second stair provides quiet access to the children's bedrooms with connecting bath, guest suite with private bath and large vaulted bonus room. The romantic facade and easy-living floor plan of the Cedar Crest create a dramatic expression of home.

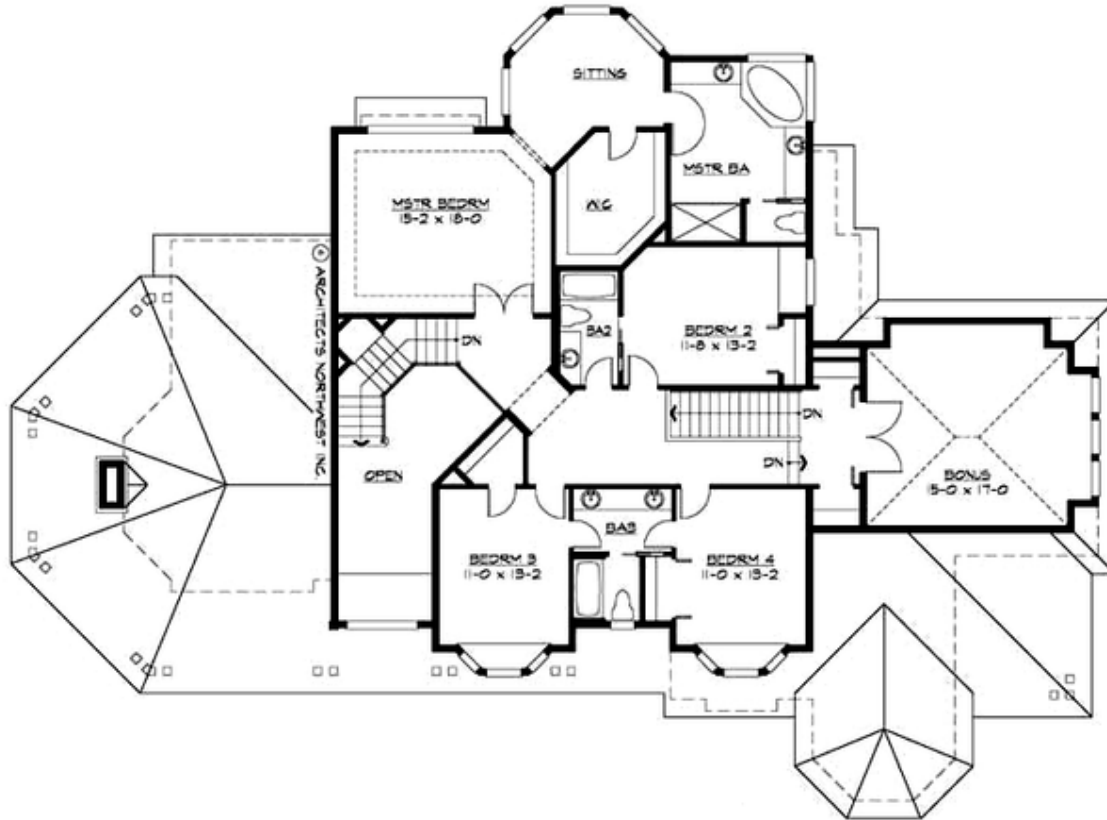
## CEDAR CREST - PLAN M4100A3S-0

### MAIN FLOOR



**CEDAR CREST - PLAN M4100A3S-0**

**UPPER FLOOR**





## CEDAR CREST - PLAN M4100A3S-0

### PLAN DETAILS

#### Area Summary

Total Area: 4100 sq. ft.  
Main Floor: 2010 sq. ft.  
Upper Floor: 2090 sq. ft.  
Garage Floor: 975 sq. ft.

#### General Information

Stories: 2  
Width: 90'-0"  
Depth: 67'-0"  
Height: 32'-0"

#### Architectural Style

Craftsman  
Northwest  
Shingle

#### Number of Rooms

Bedrooms: 4  
Full Baths: 3  
Half Baths: 1

#### Garage

Garage Size: 3  
Garage Door Location: Side

#### Roof Pitches

Primary: 8:12

#### Wall Heights

Main: 9'-0"  
Upper: 8'-0"  
3rd Floor: 0'-0"  
Lower: 0'-0"

#### Foundation Type

Crawl Space

#### Roof Framing

Trusses

#### Floor Load

Live (lbs): 40 PSF  
Dead (lbs): 10 PSF

#### Roof Load

Live (lbs): 25 PSF  
Dead (lbs): 15 PSF  
Wind: 85 MPH

#### Design Features

- Award Winning Design
- Best Selling Plan
- Bonus Space @ Upper Floor
- Den/Office
- Laundry Room @ Main Floor
- Living & Family Room
- Master Bedroom @ Upper Floor Rear
- Wide Lot
- Wrap-Around Porch