



## LAKEMONT HIGHLANDS - PLAN M4460B3S-0

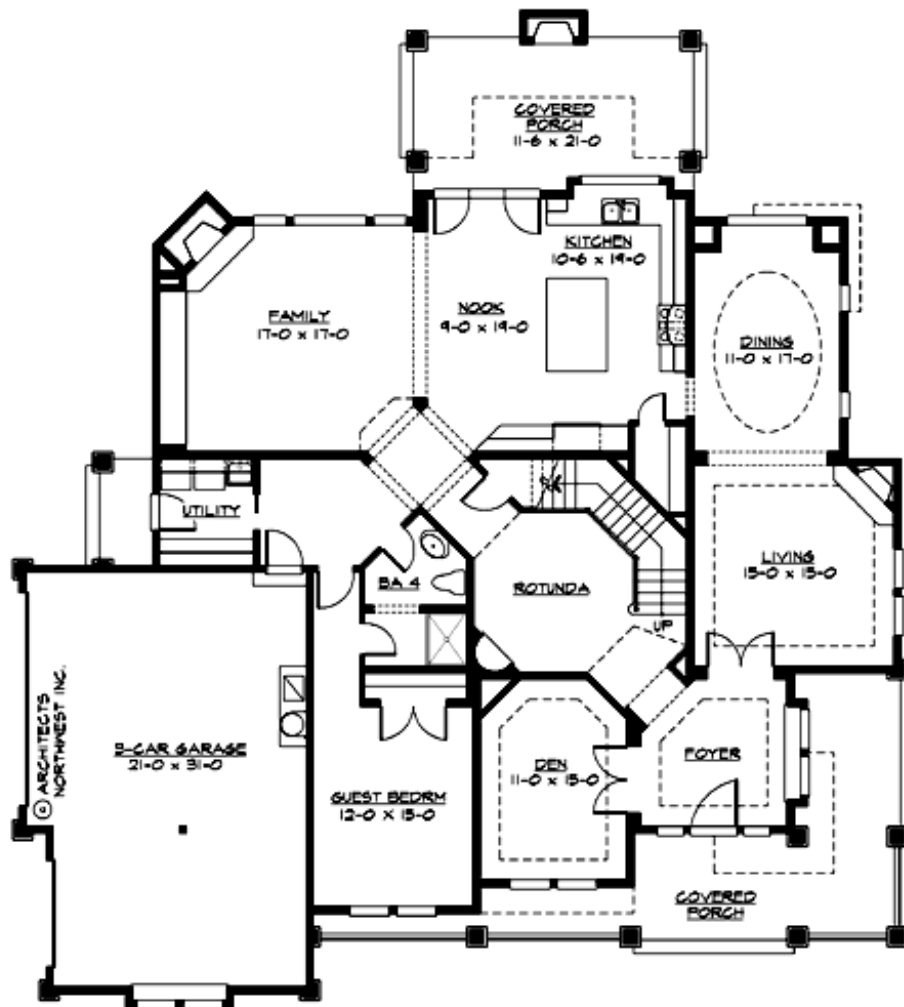
Total Area: 4385 sq. ft.  
Garage Area: 680 sq. ft.  
Garage Area: 680 sq. ft.  
Garage Size: 3  
Stories: 2  
Bedrooms: 5  
Full Baths: 4  
Width: 67'-0"  
Depth: 74'-0"  
Height: 32'-6"  
Foundation: Crawl Space



**Plan beautifully built by Agnew Homes**

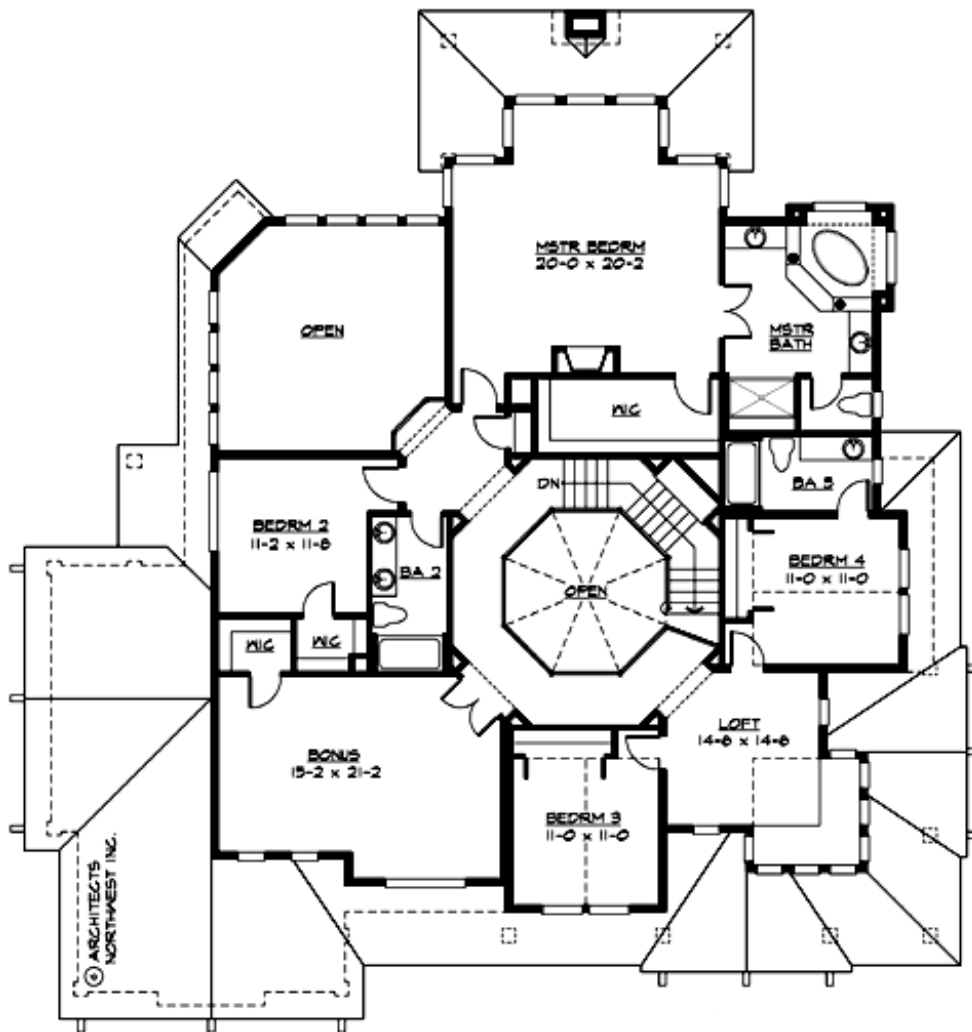
## LAKEMONT HIGHLANDS - PLAN M4460B3S-0

### MAIN FLOOR



## LAKEMONT HIGHLANDS - PLAN M4460B3S-0

### UPPER FLOOR





## LAKEMONT HIGHLANDS - PLAN M4460B3S-0

### PLAN DETAILS

#### Area Summary

Total Area: 4385 sq. ft.  
Main Floor: 2300 sq. ft.  
Upper Floor: 2085 sq. ft.  
Garage Floor: 680 sq. ft.

#### General Information

Stories: 2  
Width: 67'-0"  
Depth: 74'-0"  
Height: 32'-6"

#### Architectural Style

Craftsman  
Lodge  
Northwest

#### Number of Rooms

Bedrooms: 5  
Full Baths: 4

#### Garage

Garage Size: 3  
Garage Door Location: Side

#### Roof Pitches

Primary: 6:12  
Secondary: 4:12

#### Wall Heights

Main: 9'-0"  
Upper: 9'-0"  
3rd Floor: 0'-0"  
Lower: 0'-0"

#### Foundation Type

Crawl Space

#### Roof Framing

Trusses

#### Floor Load

Live (lbs): 40 PSF  
Dead (lbs): 10 PSF

#### Roof Load

Live (lbs): 25 PSF  
Dead (lbs): 15 PSF  
Wind: 85 MPH

#### Design Features

- Best Selling Plan
- Bonus Space @ Upper Floor
- Den/Office
- Laundry Room @ Main Floor
- Living & Family Room
- Master Bedroom @ Upper Floor Rear
- Wide Lot
- Wrap-Around Porch