

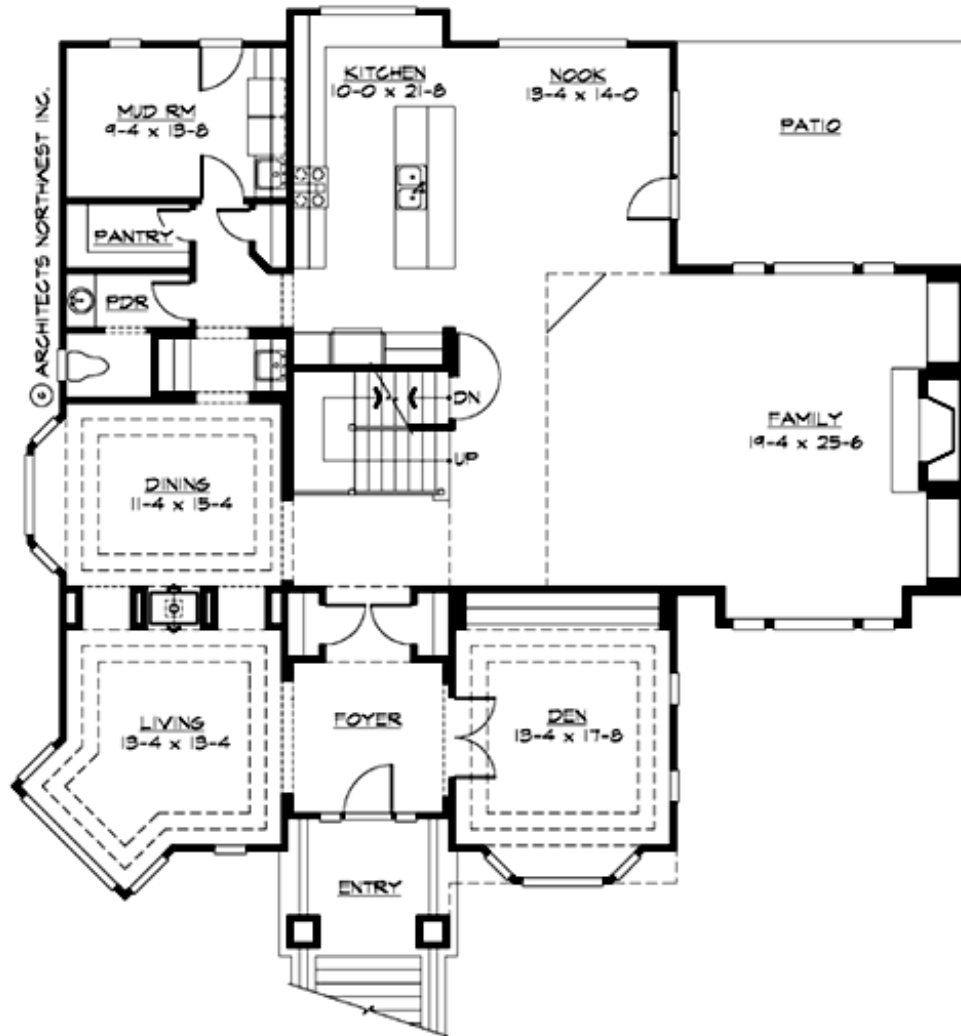
## PACIFIC HEIGHTS - PLAN M3550A2FU2STU-1

Total Area: 4423 sq. ft.  
Garage Area: 1150 sq. ft.  
Garage Area: 1150 sq. ft.  
Garage Size: 4  
Stories: 3  
Bedrooms: 4  
Full Baths: 3  
Half Baths: 2  
Width: 59'-0"  
Depth: 56'-0"  
Height: 31'-0"  
Foundation: Crawl Space



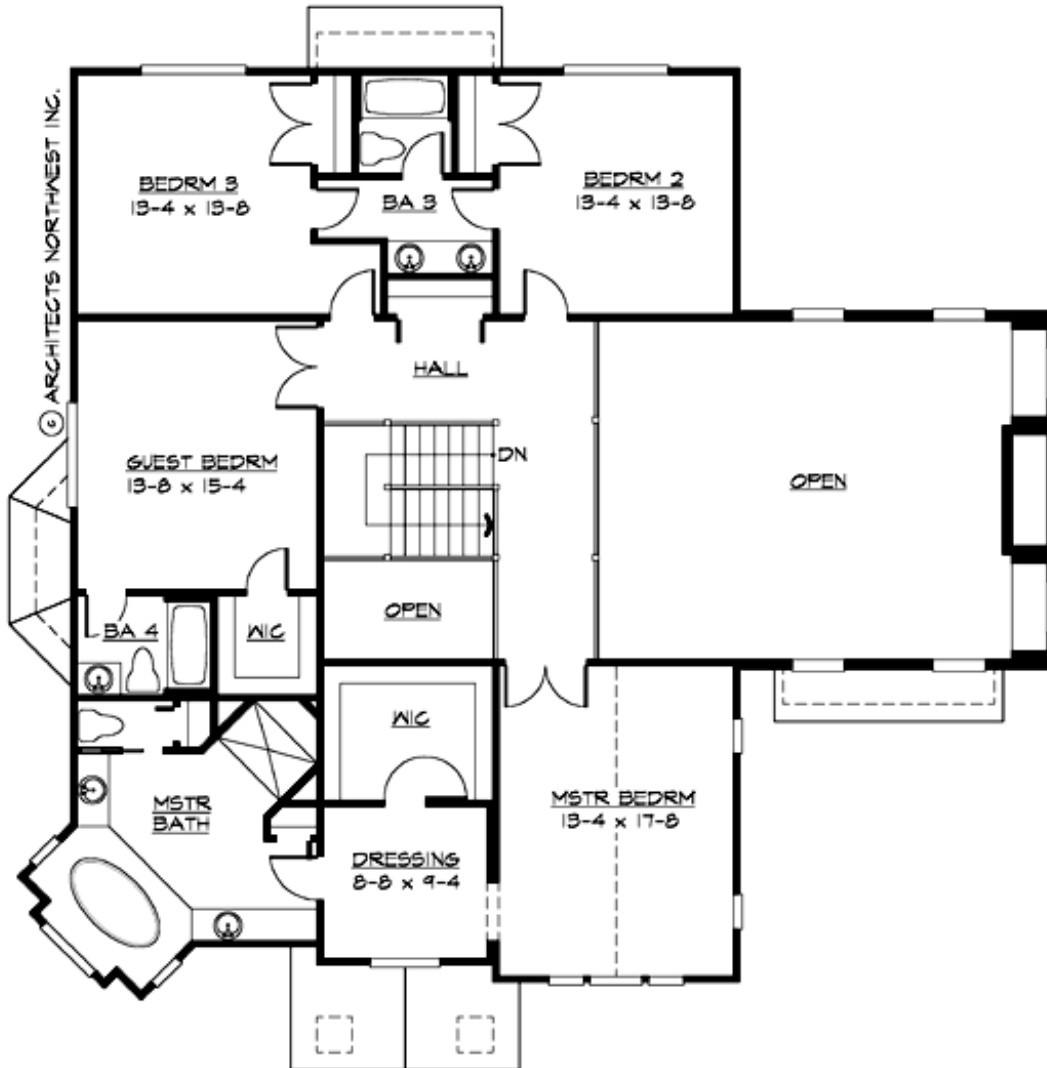
## PACIFIC HEIGHTS - PLAN M3550A2FU2STU-1

### MAIN FLOOR



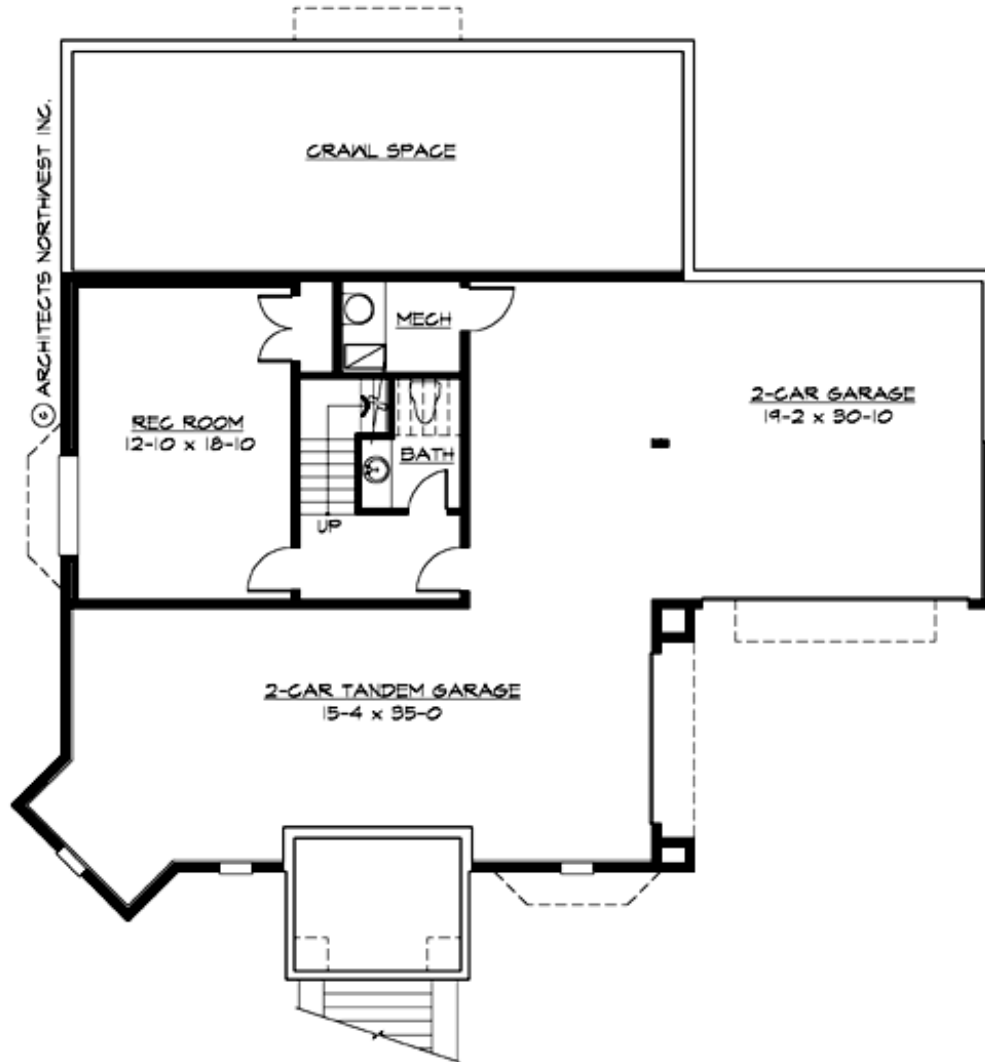
## PACIFIC HEIGHTS - PLAN M3550A2FU2STU-1

### UPPER FLOOR



## PACIFIC HEIGHTS - PLAN M3550A2FU2STU-1

### LOWER FLOOR





## PACIFIC HEIGHTS - PLAN M3550A2FU2STU-1

### PLAN DETAILS

#### Area Summary

Total Area:	4423 sq. ft.
Main Floor:	2318 sq. ft.
Upper Floor:	1677 sq. ft.
Lower Floor:	428 sq. ft.
Garage Floor:	1150 sq. ft.

#### General Information

Stories:	3
Width:	59'-0"
Depth:	56'-0"
Height:	31'-0"

#### Architectural Style

Hampton  
Shingle  
Traditional

#### Number of Rooms

Bedrooms:	4
Full Baths:	3
Half Baths:	2

#### Garage

Garage Size:	4
Garage Door Location:	Front
Garage Type:	Under

#### Roof Pitches

Primary:	8:12
----------	------

#### Wall Heights

Main:	9'-0"
Upper:	8'-0"
3rd Floor:	0'-0"
Lower:	9'-0"

#### Foundation Type

Crawl Space

#### Roof Framing

Trusses

#### Floor Load

Live (lbs):	40 PSF
Dead (lbs):	10 PSF

#### Roof Load

Live (lbs):	25 PSF
Dead (lbs):	15 PSF
Wind:	85 MPH

#### Design Features

- Bonus Space @ Lower Floor
- Den/Office
- Great Room
- Laundry Room @ Main Floor
- Master Bedroom @ Upper Floor Front