



COTTAGE GROVE COMPANION - PLAN A755A3F-0

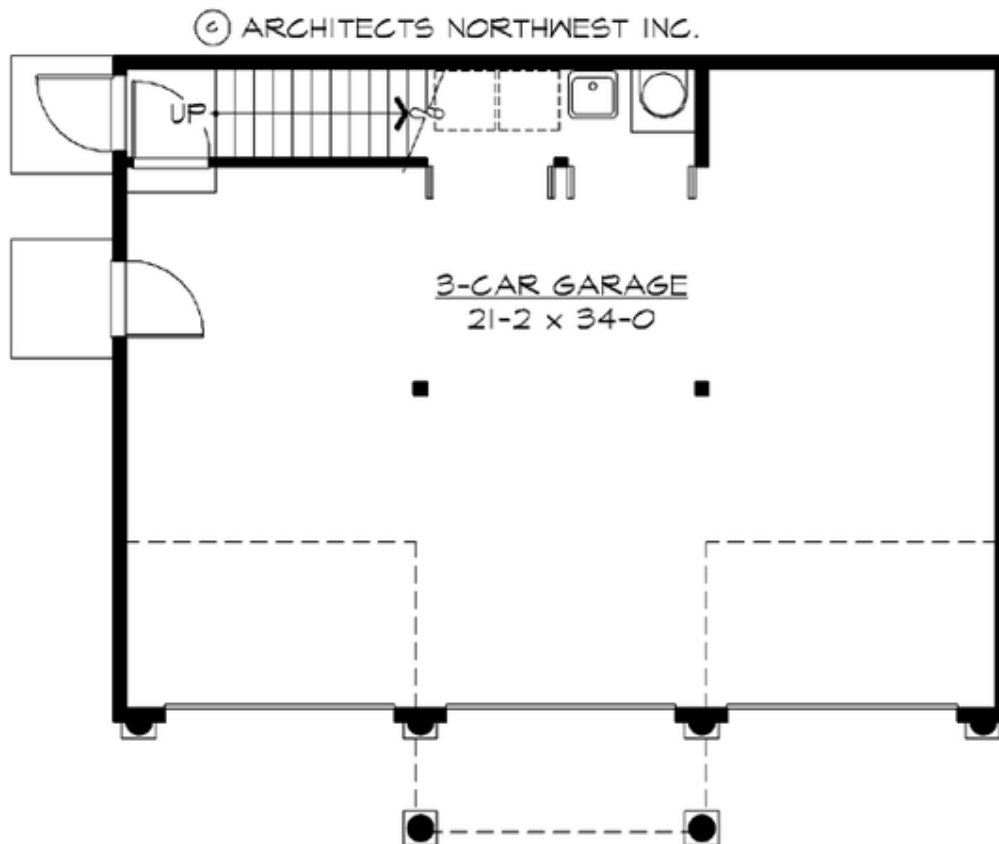
Total Area: 755 sq. ft.
Garage Area: 900 sq. ft.
Garage Area: 900 sq. ft.
Garage Size: 3
Stories: 2
Bedrooms: 1
Full Baths: 1
Width: 35'-0"
Depth: 30'-0"
Height: 27'-6"
Foundation: Slab On Grade



An Ideal Mother-In-Law With 3-Car Garage. Designed for extended-family flexibility, the Cottage Grove Companion offers a large 3-car garage, topped by a delightful guest house plan featuring a private entry with a spacious one-bedroom apartment. Traditional roof forms and classic detailing make this plan an attractive fit in any neighborhood.

COTTAGE GROVE COMPANION - PLAN A755A3F-0

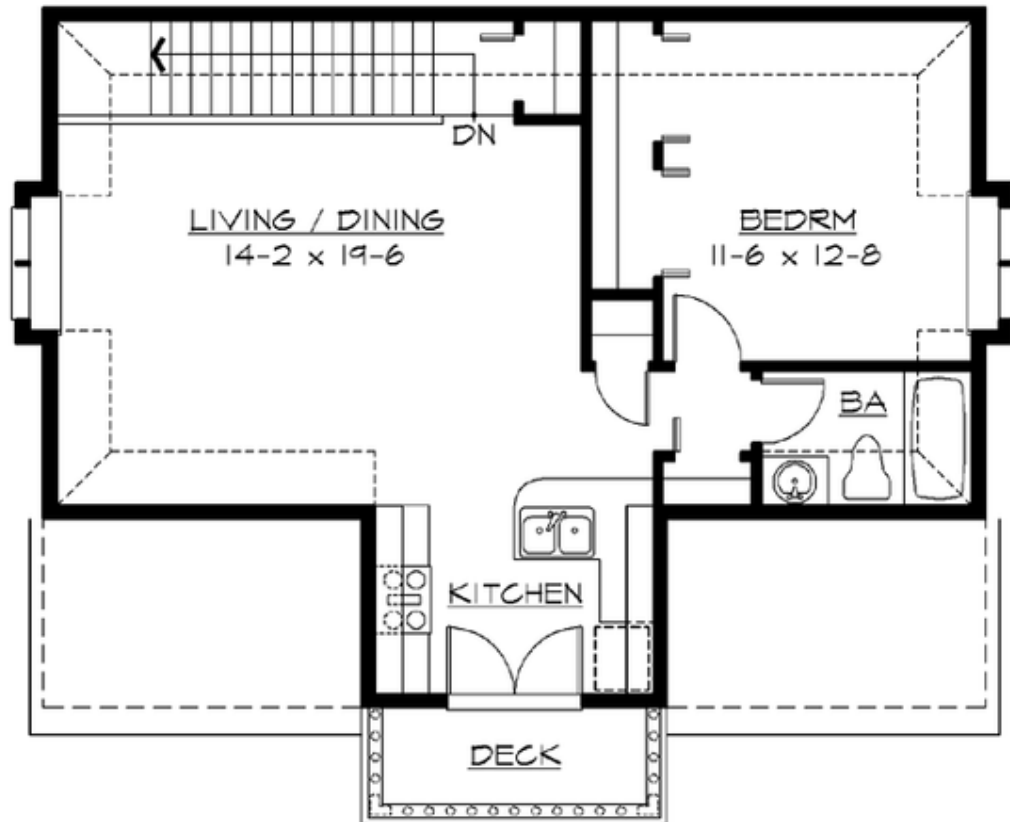
MAIN FLOOR



COTTAGE GROVE COMPANION - PLAN A755A3F-0

UPPER FLOOR

© ARCHITECTS NORTHWEST INC.





COTTAGE GROVE COMPANION - PLAN A755A3F-0

PLAN DETAILS

Area Summary

Total Area: 755 sq. ft.
 Upper Floor: 755 sq. ft.
 Garage Floor: 900 sq. ft.

General Information

Stories: 2
 Width: 35'-0"
 Depth: 30'-0"
 Height: 27'-6"

Architectural Style

Carriage
 Hampton
 Shingle

Number of Rooms

Bedrooms: 1
 Full Baths: 1

Garage

Garage Size: 3
 Garage Door Location: Front

Roof Pitches

Primary: 12:12

Wall Heights

Main: 9'-0"
 Upper: 9'-0"
 3rd Floor: 0'-0"
 Lower: 0'-0"

Foundation Type

Slab On Grade

Roof Framing

Stick

Floor Load

Live (lbs): 40 PSF
 Dead (lbs): 10 PSF

Roof Load

Live (lbs): 25 PSF
 Dead (lbs): 15 PSF
 Wind: 85 MPH

Design Features

- Affordable Plan
- Best Selling Plan
- Laundry Room @ Main Floor
- Living & Family Room
- Narrow Lot