



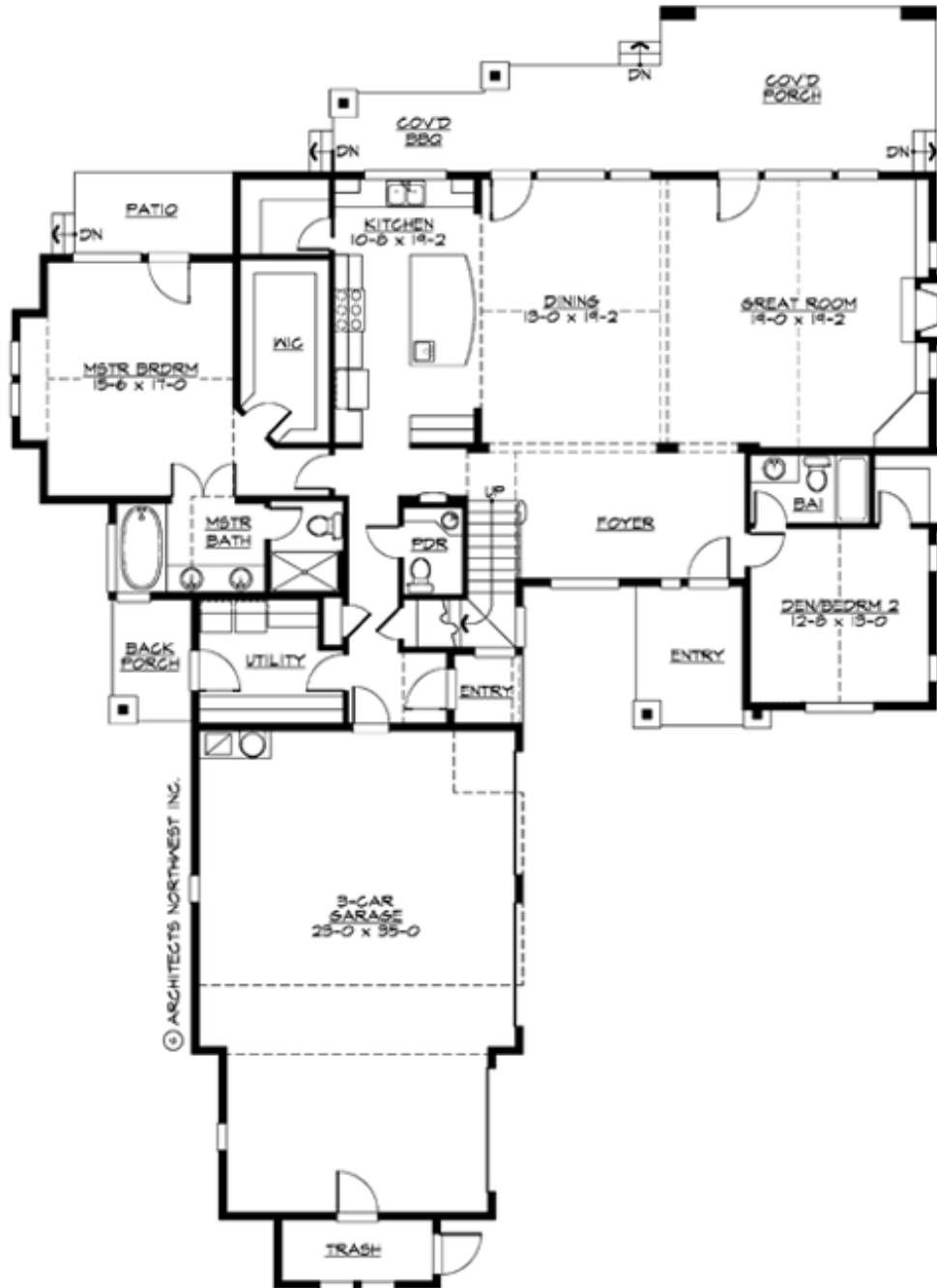
## PINEGRASS - PLAN M3361A3S-0

Total Area: 3361 sq. ft.  
Garage Area: 866 sq. ft.  
Garage Area: 866 sq. ft.  
Garage Size: 3  
Stories: 2  
Bedrooms: 4  
Full Baths: 4  
Half Baths: 1  
Width: 68'-0"  
Depth: 93'-0"  
Height: 24'-6"  
Foundation: Crawl Space



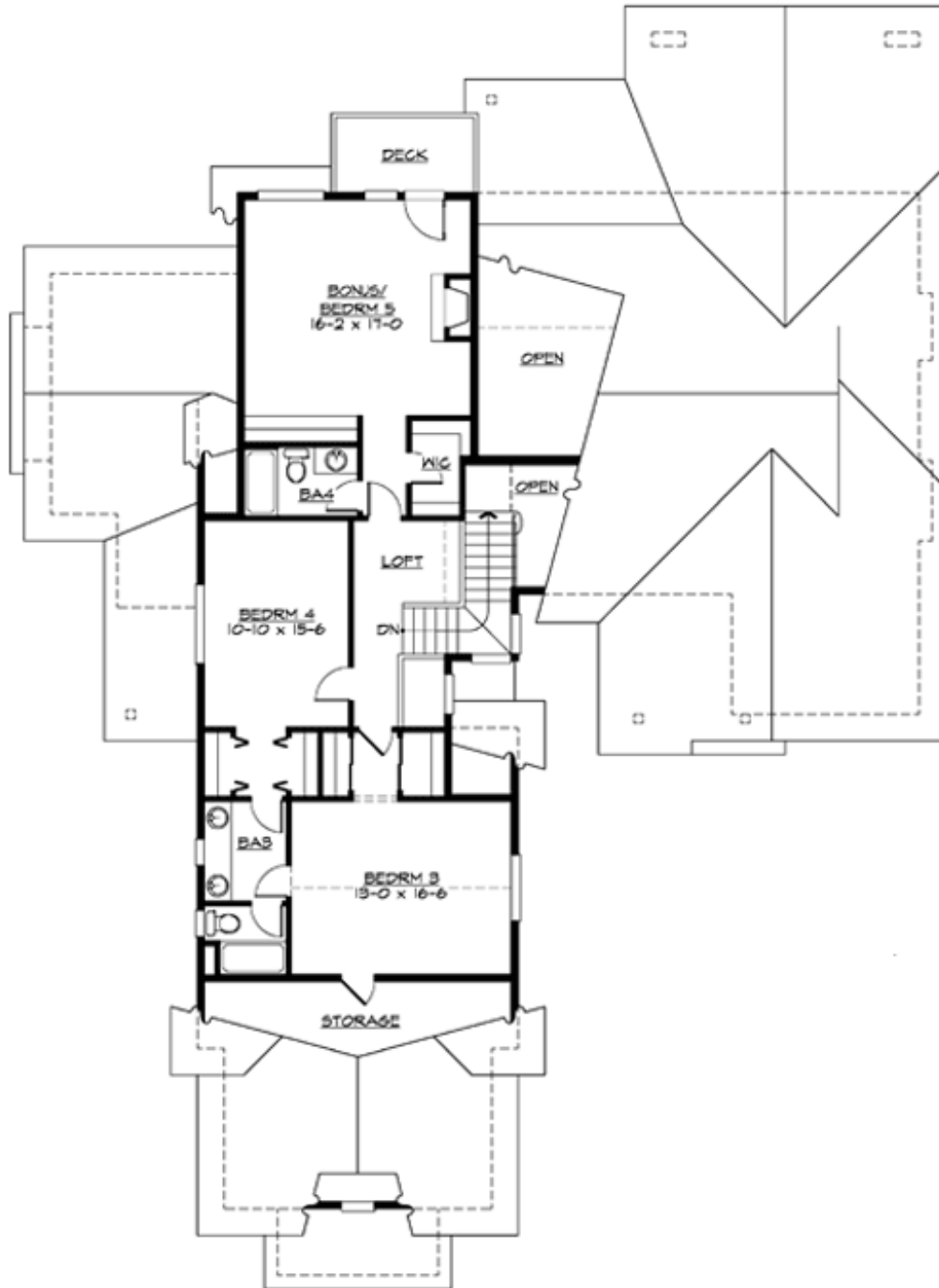
## PINEGRASS - PLAN M3361A3S-0

### MAIN FLOOR



## PINEGRASS - PLAN M3361A3S-0

### UPPER FLOOR





## PINEGRASS - PLAN M3361A3S-0

### PLAN DETAILS

#### Area Summary

Total Area:	3361 sq. ft.
Main Floor:	2223 sq. ft.
Upper Floor:	1138 sq. ft.
Garage Floor:	866 sq. ft.

#### General Information

Stories:	2
Width:	68'-0"
Depth:	93'-0"
Height:	24'-6"

#### Architectural Style

Craftsman  
Lodge  
Shingle

#### Number of Rooms

Bedrooms:	4
Full Baths:	4
Half Baths:	1

#### Garage

Garage Size:	3
Garage Door Location:	Side

#### Roof Pitches

Primary:	10:12
Secondary:	4:12

#### Wall Heights

Main:	9'-0"
Upper:	8'-0"
3rd Floor:	0'-0"
Lower:	0'-0"

#### Foundation Type

Crawl Space

#### Roof Framing

Combination

#### Floor Load

Live (lbs):	40 PSF
Dead (lbs):	10 PSF

#### Roof Load

Live (lbs):	140 PSF
Dead (lbs):	15 PSF
Wind:	85 MPH

#### Design Features

- Best Selling Plan
- Bonus Space @ Upper Floor
- Den/Office
- Great Room
- Laundry Room @ Main Floor
- Master Bedroom @ Main Floor Rear
- Rear Porch
- Suncadia Collection
- Vacation Plan