

## FAULKNER - PLAN M1884A2F-0

Total Area: 1884 sq. ft.  
Garage Area: 410 sq. ft.  
Garage Area: 410 sq. ft.  
Garage Size: 2  
Stories: 2  
Bedrooms: 3  
Full Baths: 2  
Half Baths: 1  
Width: 38'-0"  
Depth: 51'-0"  
Height: 24'-0"  
Foundation: Crawl Space

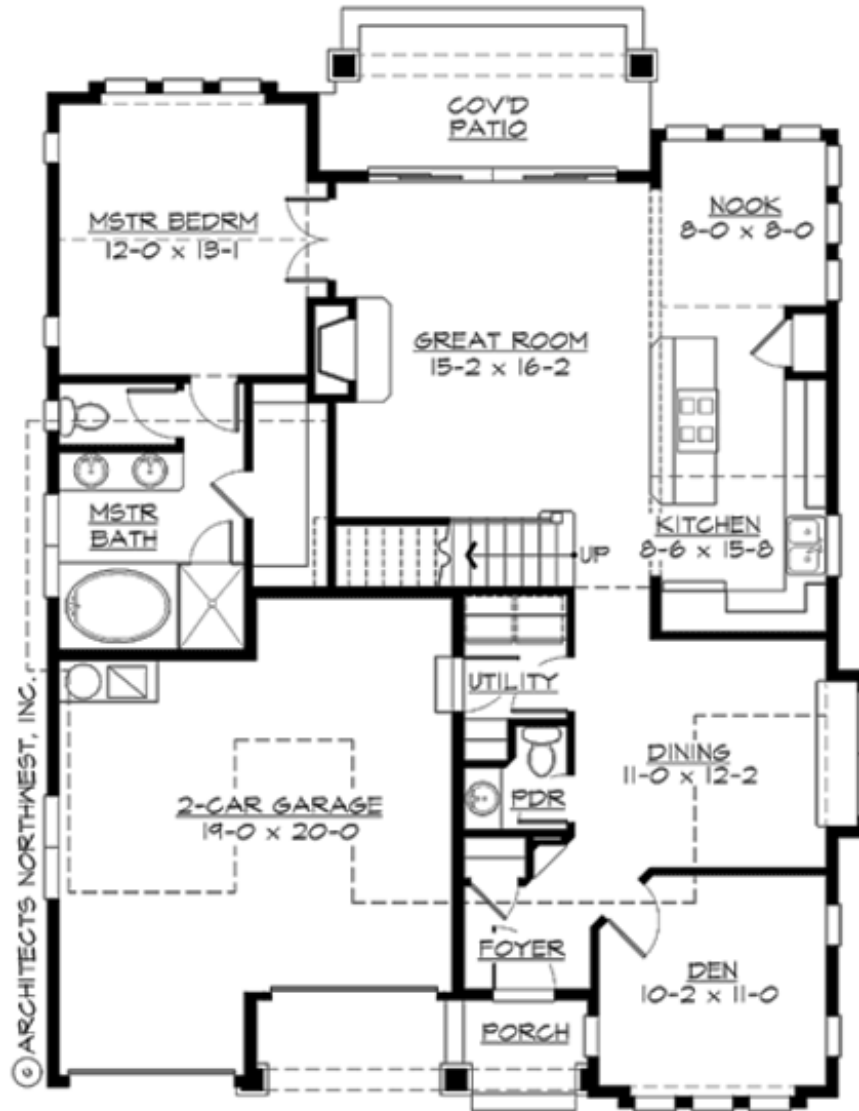


### ***A Beautiful Bungalow with a Family-Friendly Plan.***

As elegant as its literary namesake, the Faulkner combines historically expressive forms and details with a modern floor plan perfect for today's lifestyle. The two-story great room is the heart of the plan, adjacent to the dramatic stair, climbing to the overlook loft and open balcony accessing the secondary bedrooms and bath. The chef's kitchen and nook complete the open family living area. The private master suite is conveniently located off the great room, with a dining space and work-at-home den completing the layout.

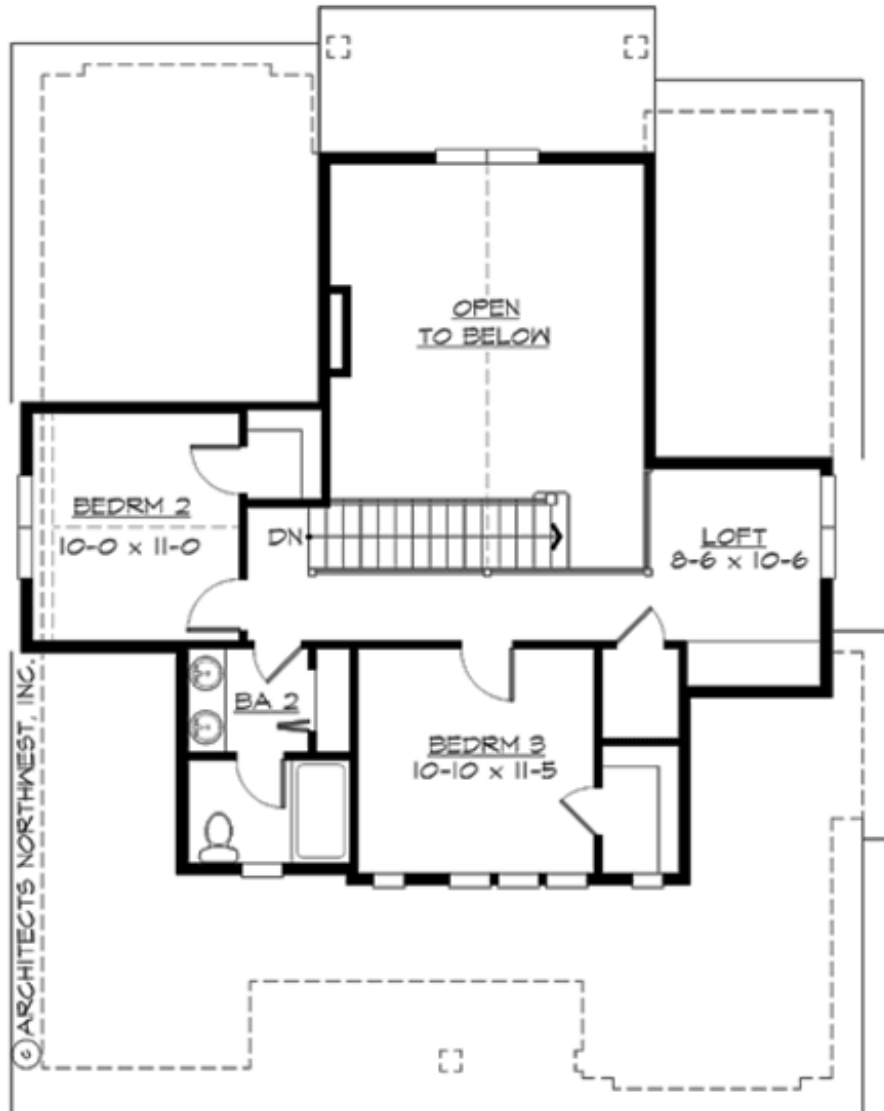
## FAULKNER - PLAN M1884A2F-0

### MAIN FLOOR



## FAULKNER - PLAN M1884A2F-0

### UPPER FLOOR





## FAULKNER - PLAN M1884A2F-0

### PLAN DETAILS

#### Area Summary

Total Area: 1884 sq. ft.  
Main Floor: 1279 sq. ft.  
Upper Floor: 605 sq. ft.  
Garage Floor: 410 sq. ft.

#### General Information

Stories: 2  
Width: 38'-0"  
Depth: 51'-0"  
Height: 24'-0"

#### Architectural Style

Bungalow  
Cottage  
Craftsman

#### Number of Rooms

Bedrooms: 3  
Full Baths: 2  
Half Baths: 1

#### Garage

Garage Size: 2  
Garage Door Location: Front

#### Roof Pitches

Primary: 8:12  
Secondary: 4:12

#### Wall Heights

Main: 9'-0"  
Upper: 8'-0"  
3rd Floor: 0'-0"  
Lower: 0'-0"

#### Foundation Type

Crawl Space

#### Roof Framing

Trusses

#### Floor Load

Live (lbs): 40 PSF  
Dead (lbs): 10 PSF

#### Roof Load

Live (lbs): 25 PSF  
Dead (lbs): 15 PSF  
Wind: 85 MPH

#### Design Features

- Best Selling Plan
- Bonus Space @ Upper Floor
- Great Room
- Laundry Room @ Main Floor
- Master Bedroom @ Main Floor Rear
- Narrow Lot
- Rear Porch
- Small Plan