

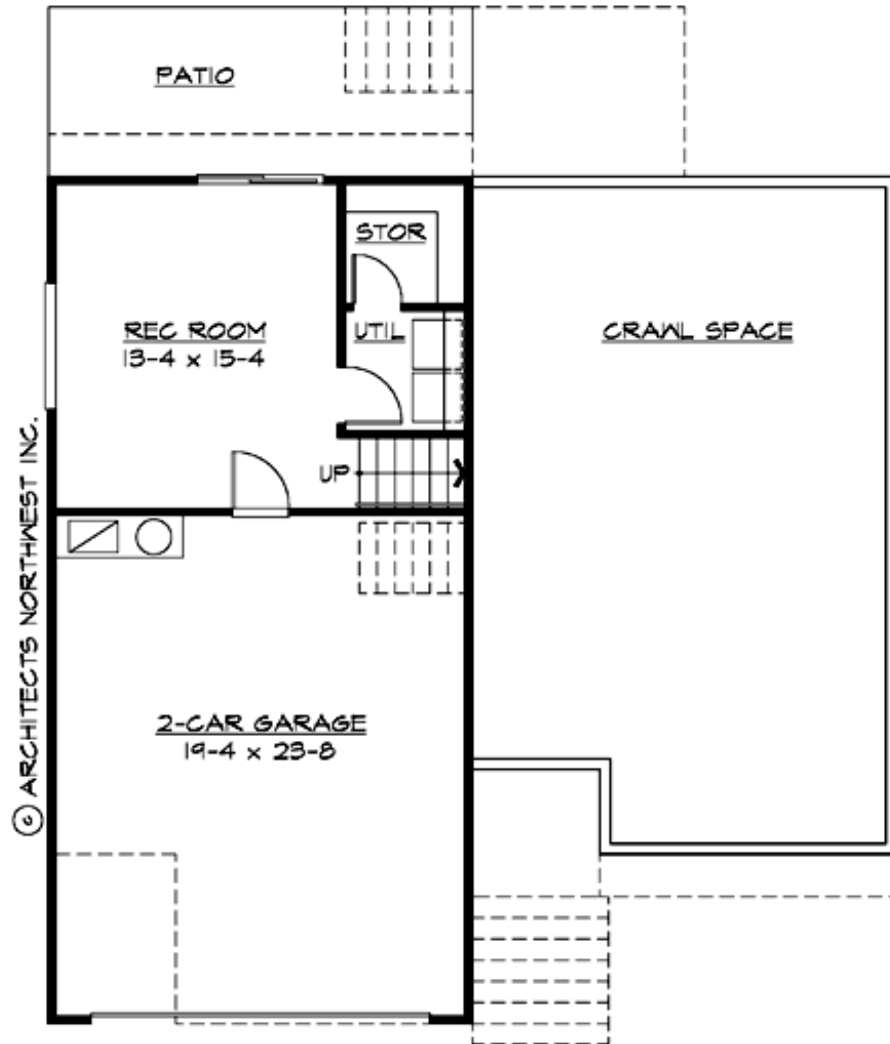
## WALNUT GROVE - PLAN T1735B2F-0

Total Area: 1735 sq. ft.  
Garage Area: 480 sq. ft.  
Garage Area: 480 sq. ft.  
Garage Size: 2  
Stories: 2  
Bedrooms: 3  
Full Baths: 2  
Half Baths: 1  
Width: 40'-0"  
Depth: 42'-0"  
Height: 23'-0"  
Foundation: Crawl Space



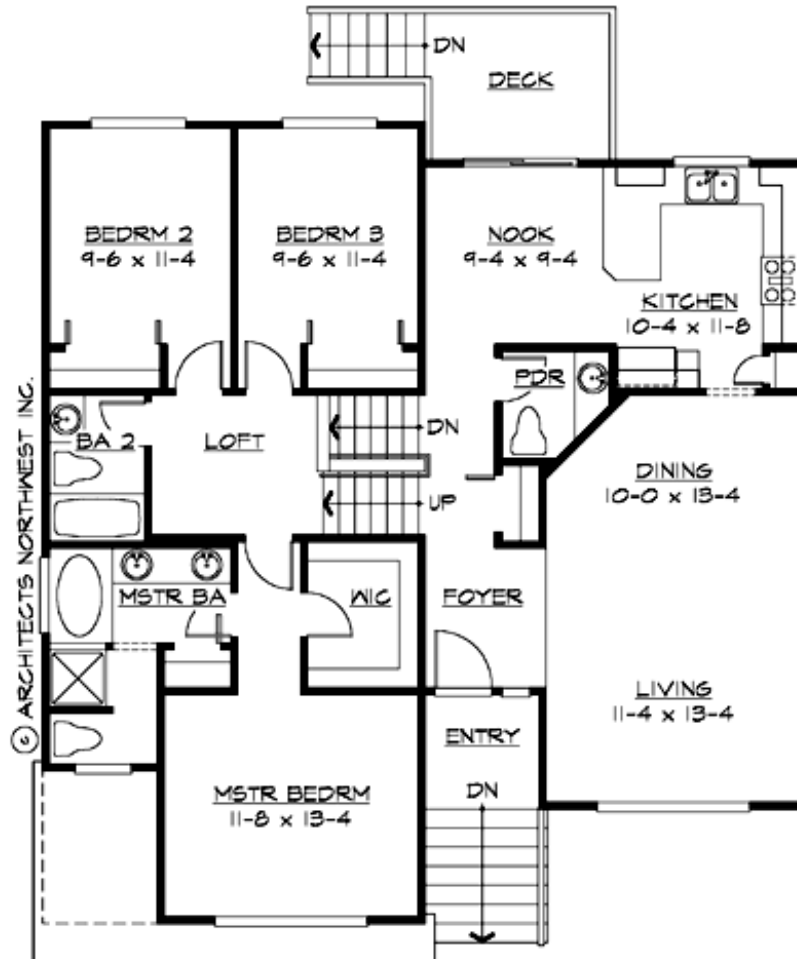
## WALNUT GROVE - PLAN T1735B2F-0

### MAIN FLOOR



## WALNUT GROVE - PLAN T1735B2F-0

### UPPER FLOOR





## WALNUT GROVE - PLAN T1735B2F-0

### PLAN DETAILS

#### Area Summary

Total Area:	1735 sq. ft.
Main Floor:	1415 sq. ft.
Lower Floor:	320 sq. ft.
Garage Floor:	480 sq. ft.

#### General Information

Stories:	2
Width:	40'-0"
Depth:	42'-0"
Height:	23'-0"

#### Architectural Style

Contemporary  
Northwest  
Ranch

#### Number of Rooms

Bedrooms:	3
Full Baths:	2
Half Baths:	1

#### Garage

Garage Size:	2
Garage Door Location:	Front

#### Roof Pitches

Primary:	7:12
----------	------

#### Wall Heights

Main:	8'-0"
Upper:	0'-0"
3rd Floor:	0'-0"
Lower:	8'-0"

#### Foundation Type

Crawl Space

#### Roof Framing

Trusses

#### Floor Load

Live (lbs):	40 PSF
Dead (lbs):	10 PSF

#### Roof Load

Live (lbs):	25 PSF
Dead (lbs):	15 PSF
Wind:	85 MPH

#### Design Features

- Affordable Plan
- Bonus Space @ Lower Floor
- Laundry Room @ Lower Floor
- Living & Family Room
- Master Bedroom @ Main Floor Front
- Narrow Lot