



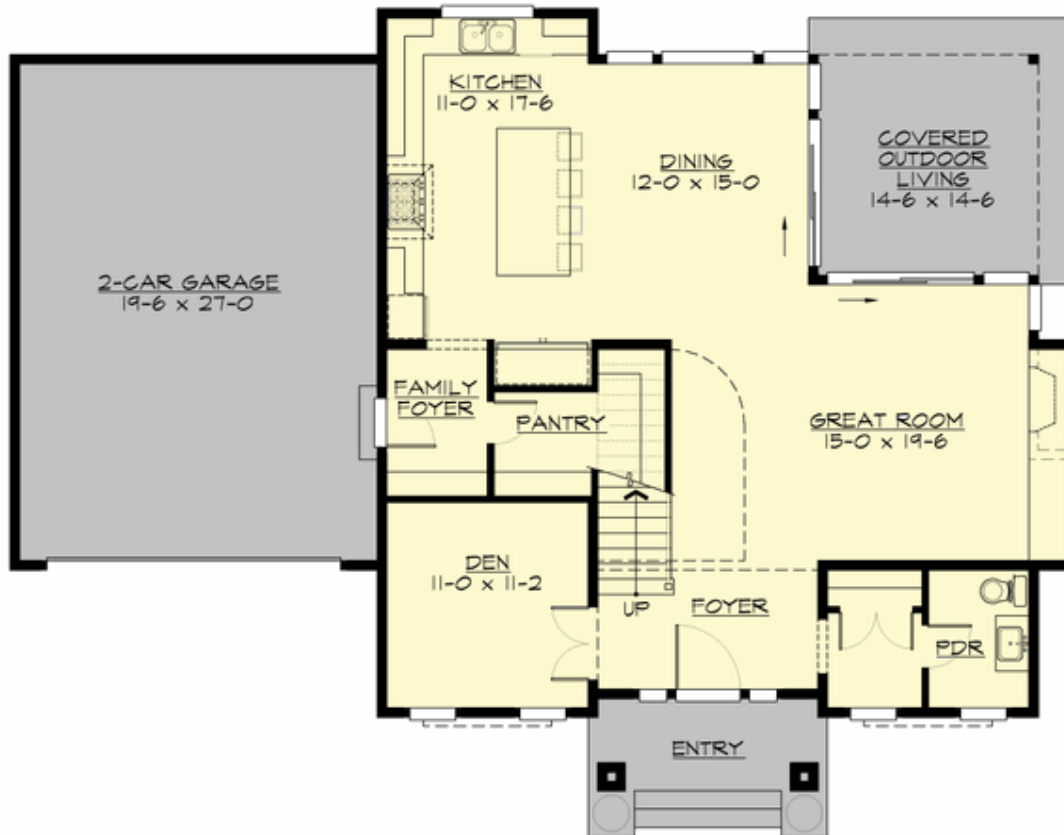
## CAYDEN - PLAN M2595C2F-0

Total Area: 2645 sq. ft.  
Garage Area: 560 sq. ft.  
Garage Area: 560 sq. ft.  
Garage Size: 2  
Stories: 2  
Bedrooms: 3  
Full Baths: 2  
Half Baths: 1  
Width: 56'-0"  
Depth: 42'-6"  
Height: 24'-0"  
Foundation: Crawl Space



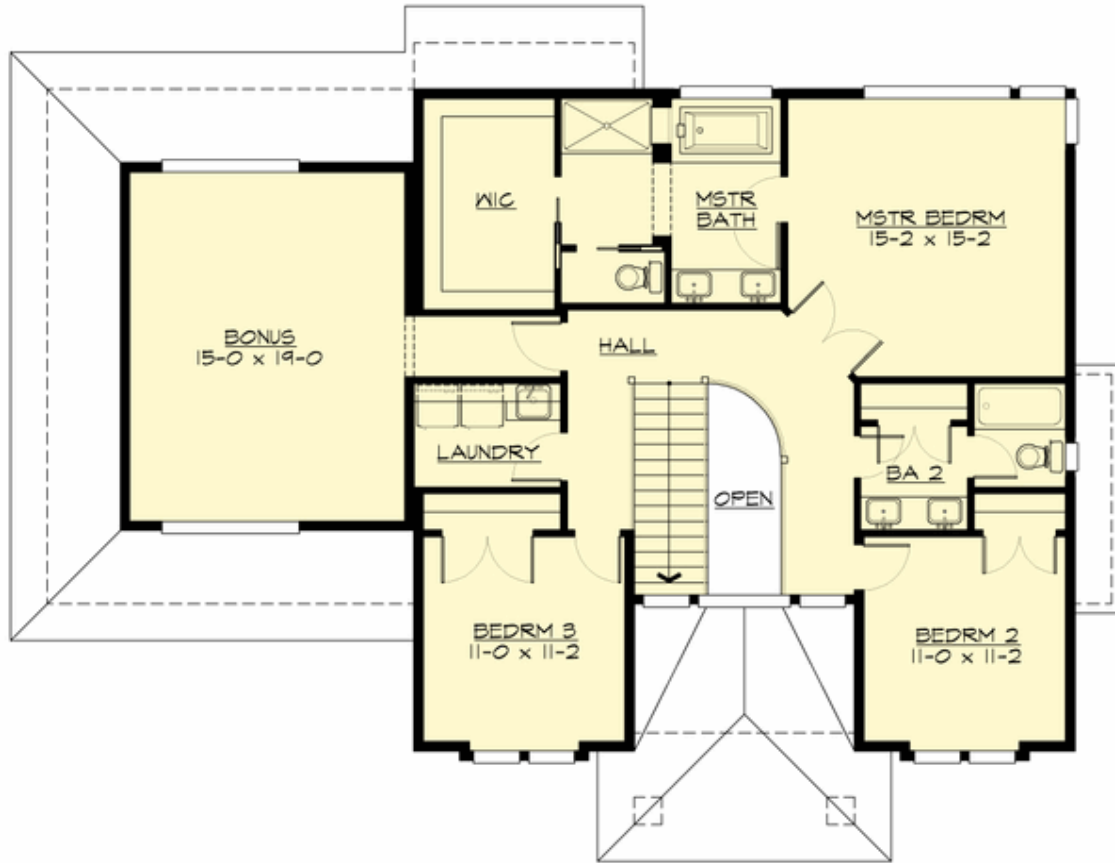
## CAYDEN - PLAN M2595C2F-0

### MAIN FLOOR



## CAYDEN - PLAN M2595C2F-0

### UPPER FLOOR





## CAYDEN - PLAN M2595C2F-0

### PLAN DETAILS

#### Area Summary

Total Area: 2645 sq. ft.  
Main Floor: 1195 sq. ft.  
Upper Floor: 1450 sq. ft.  
Garage Floor: 560 sq. ft.

#### General Information

Stories: 2  
Width: 56'-0"  
Depth: 42'-6"  
Height: 24'-0"

#### Architectural Style

Contemporary  
Modern  
Prarie

#### Number of Rooms

Bedrooms: 3  
Full Baths: 2  
Half Baths: 1

#### Garage

Garage Size: 2  
Garage Door Location: Front

#### Roof Pitches

Primary: 4:12  
Secondary: 3:12

#### Wall Heights

Main: 9'-0"  
Upper: 8'-0"

#### Foundation Type

Crawl Space

#### Roof Framing

Trusses

#### Floor Load

Live (lbs): 40 PSF  
Dead (lbs): 10 PSF

#### Roof Load

Live (lbs): 25 PSF  
Dead (lbs): 15 PSF  
Wind: 85 MPH

#### Design Features

- Bonus Space @ Upper Floor
- Den/Office
- Great Room
- Laundry Room @ Upper Floor
- Master Bedroom @ Upper Floor Rear
- Rear Porch
- View Lot - Rear
- Wide Lot