



## NORTHTOWNE - PLAN M4694B4FT-0

Total Area: 4761 sq. ft.  
Garage Area: 895 sq. ft.  
Garage Area: 895 sq. ft.  
Garage Size: 4  
Stories: 3  
Bedrooms: 4  
Full Baths: 4  
Width: 65'-0"  
Depth: 61'-6"  
Height: 33'-0"  
Foundation: Crawl Space



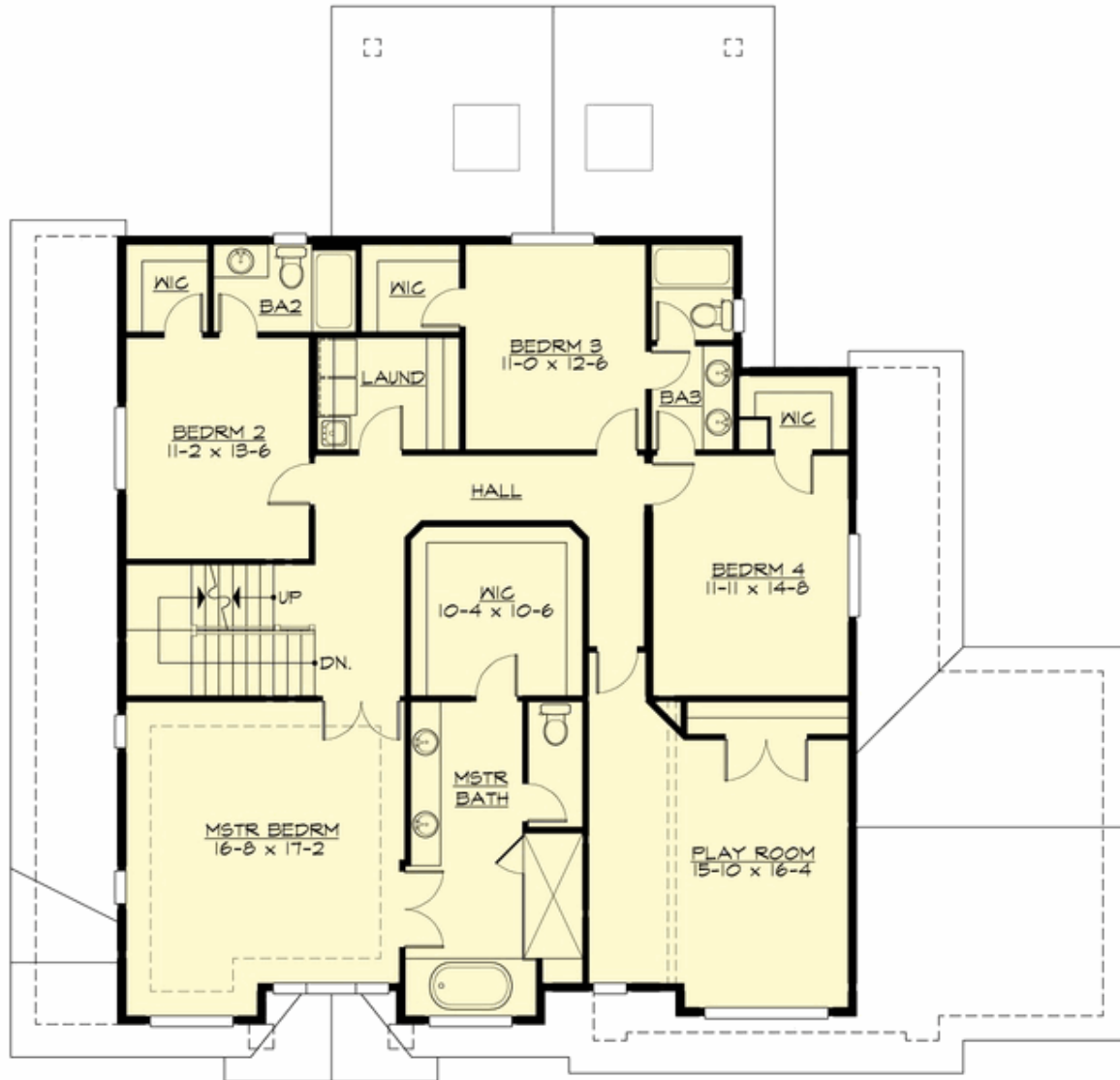
## NORTHTOWNE - PLAN M4694B4FT-0

### MAIN FLOOR



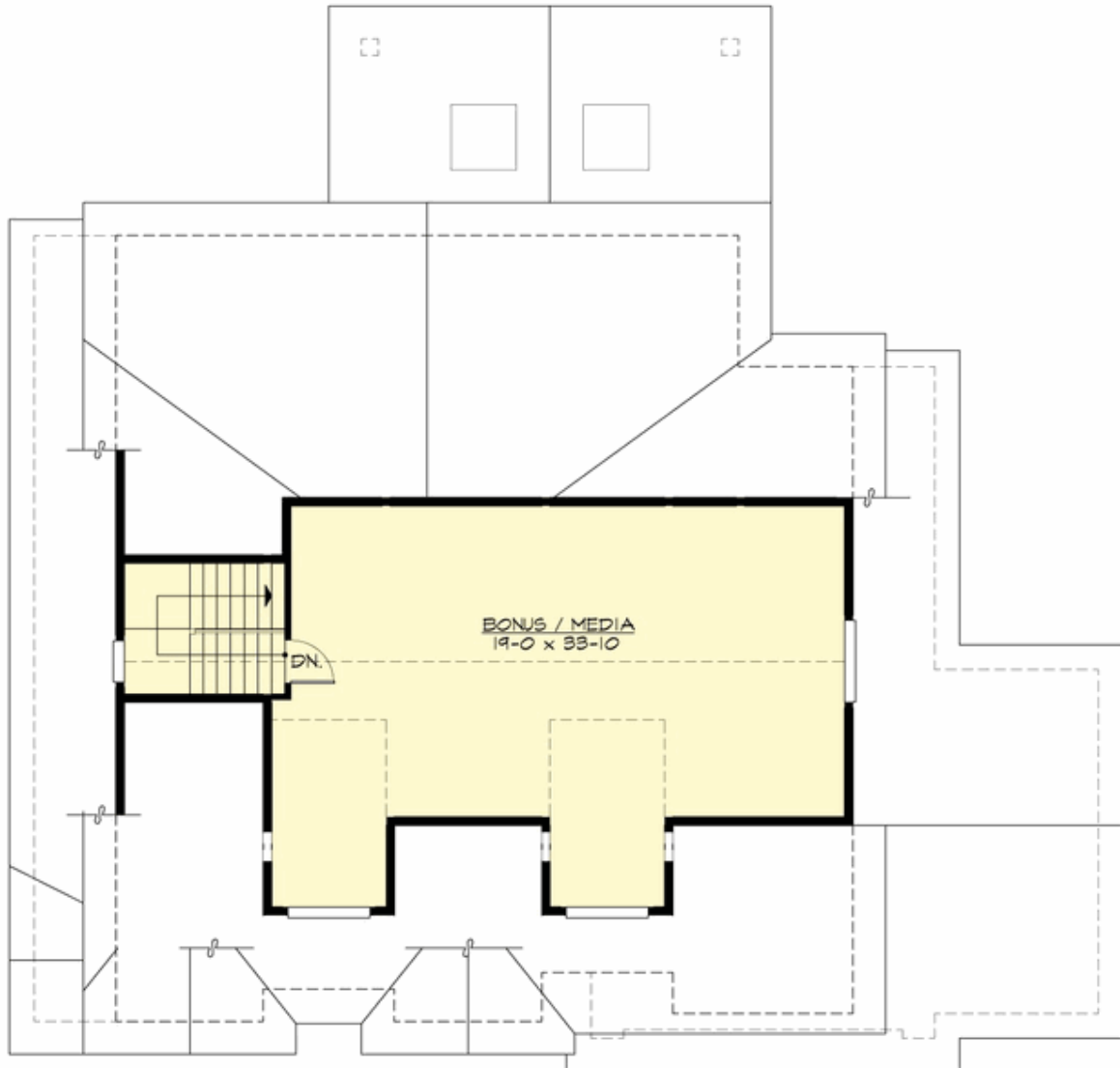
## NORTHTOWNE - PLAN M4694B4FT-0

### UPPER FLOOR



## NORTHTOWNE - PLAN M4694B4FT-0

### THIRD FLOOR





## NORTHTOWNE - PLAN M4694B4FT-0

### PLAN DETAILS

#### Area Summary

Total Area:	4761 sq. ft.
Main Floor:	1795 sq. ft.
Upper Floor:	2066 sq. ft.
3rd Floor:	900 sq. ft.
Garage Floor:	895 sq. ft.

#### General Information

Stories:	3
Width:	65'-0"
Depth:	61'-6"
Height:	33'-0"

#### Architectural Style

Hampton  
Shingle  
Traditional

#### Number of Rooms

Bedrooms:	4
Full Baths:	4

#### Garage

Garage Size:	4
Garage Door Location:	Front
Garage Type:	Tandem

#### Roof Pitches

Primary:	10:12
Secondary:	8:12

#### Wall Heights

Main:	10'-0"
Upper:	9'-0"
3rd Floor:	8'-0"

#### Foundation Type

Crawl Space

#### Roof Framing

Combination

#### Floor Load

Live (lbs):	40 PSF
Dead (lbs):	10 PSF

#### Roof Load

Live (lbs):	25 PSF
Dead (lbs):	15 PSF
Wind:	85 MPH

#### Design Features

- Bonus Space @ Upper Floor
- Den/Office
- Front and Rear Porch
- Great Room
- Laundry Room @ Upper Floor
- Master Bedroom @ Upper Floor Front
- View Lot - Front
- View Lot - Rear