

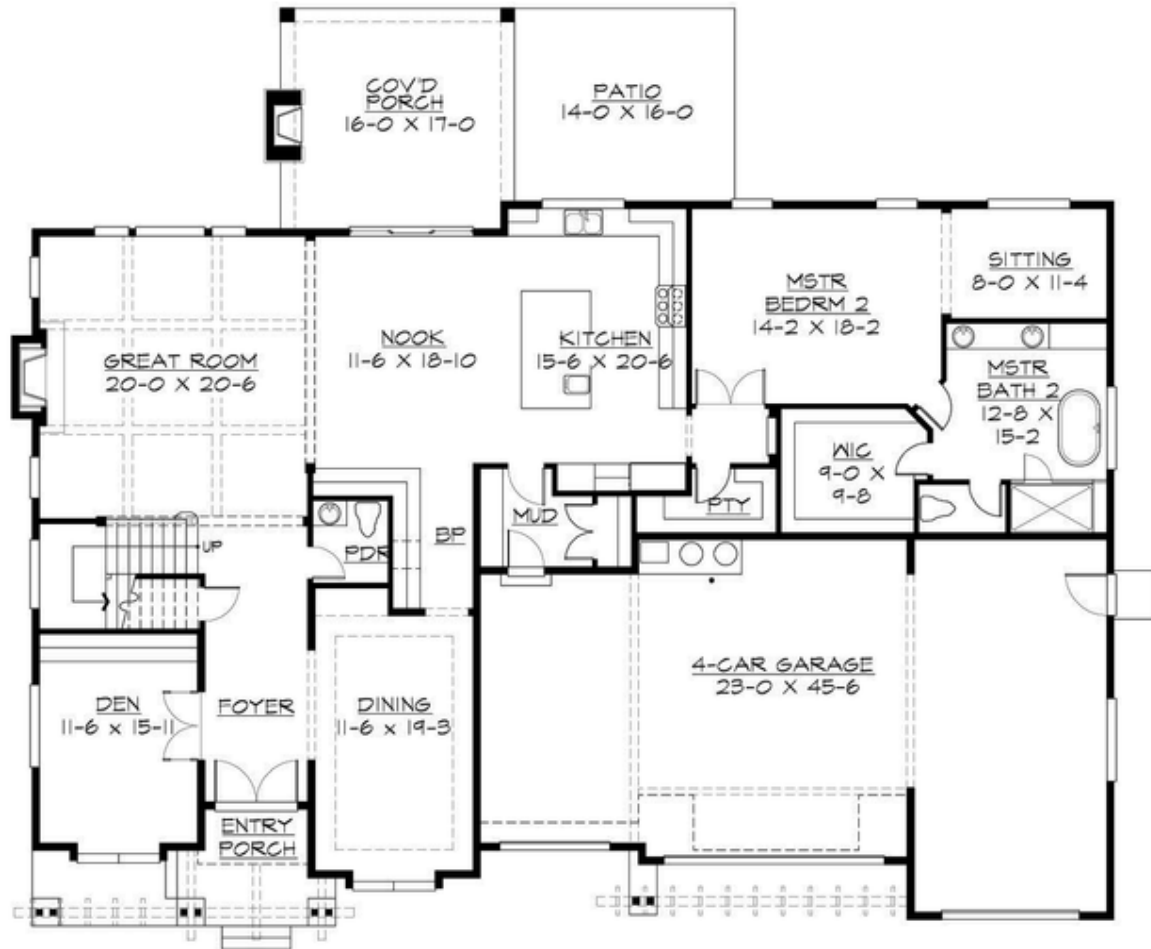
## ATHENIA - PLAN M4161E4F-0

Total Area: 5437 sq. ft.  
Garage Area: 1101 sq. ft.  
Garage Area: 1101 sq. ft.  
Garage Size: 4  
Stories: 2  
Bedrooms: 5  
Full Baths: 5  
Half Baths: 1  
Width: 78'-6"  
Depth: 66'-0"  
Height: 32'-0"  
Foundation: Crawl Space



## ATHENIA - PLAN M4161E4F-0

### MAIN FLOOR



## ATHENIA - PLAN M4161E4F-0

### UPPER FLOOR





## **ATHENIA - PLAN M4161E4F-0**

### **PLAN DETAILS**

#### **Area Summary**

Total Area: 5437 sq. ft.  
Main Floor: 2628 sq. ft.  
Upper Floor: 2809 sq. ft.  
Garage Floor: 1101 sq. ft.

#### **General Information**

Stories: 2  
Width: 78'-6"  
Depth: 66'-0"  
Height: 32'-0"

#### **Architectural Style**

Craftsman  
Northwest  
Shingle

#### **Number of Rooms**

Bedrooms: 5  
Full Baths: 5  
Half Baths: 1

#### **Garage**

Garage Size: 4  
Garage Door Location: Front

#### **Roof Pitches**

Primary: 8:12  
Secondary: 6:12

#### **Wall Heights**

Main: 10'-0"  
Upper: 9'-0"

#### **Foundation Type**

Crawl Space

#### **Roof Framing**

Trusses

#### **Floor Load**

Live (lbs): 40 PSF  
Dead (lbs): 10 PSF

#### **Roof Load**

Live (lbs): 25 PSF  
Dead (lbs): 15 PSF  
Wind: 85 MPH

#### **Design Features**

- Bonus Space @ Upper Floor
- Den/Office
- Front and Rear Porch
- Great Room
- Laundry Room @ Upper Floor
- Master Bedroom @ Upper Floor
- Wide Lot