



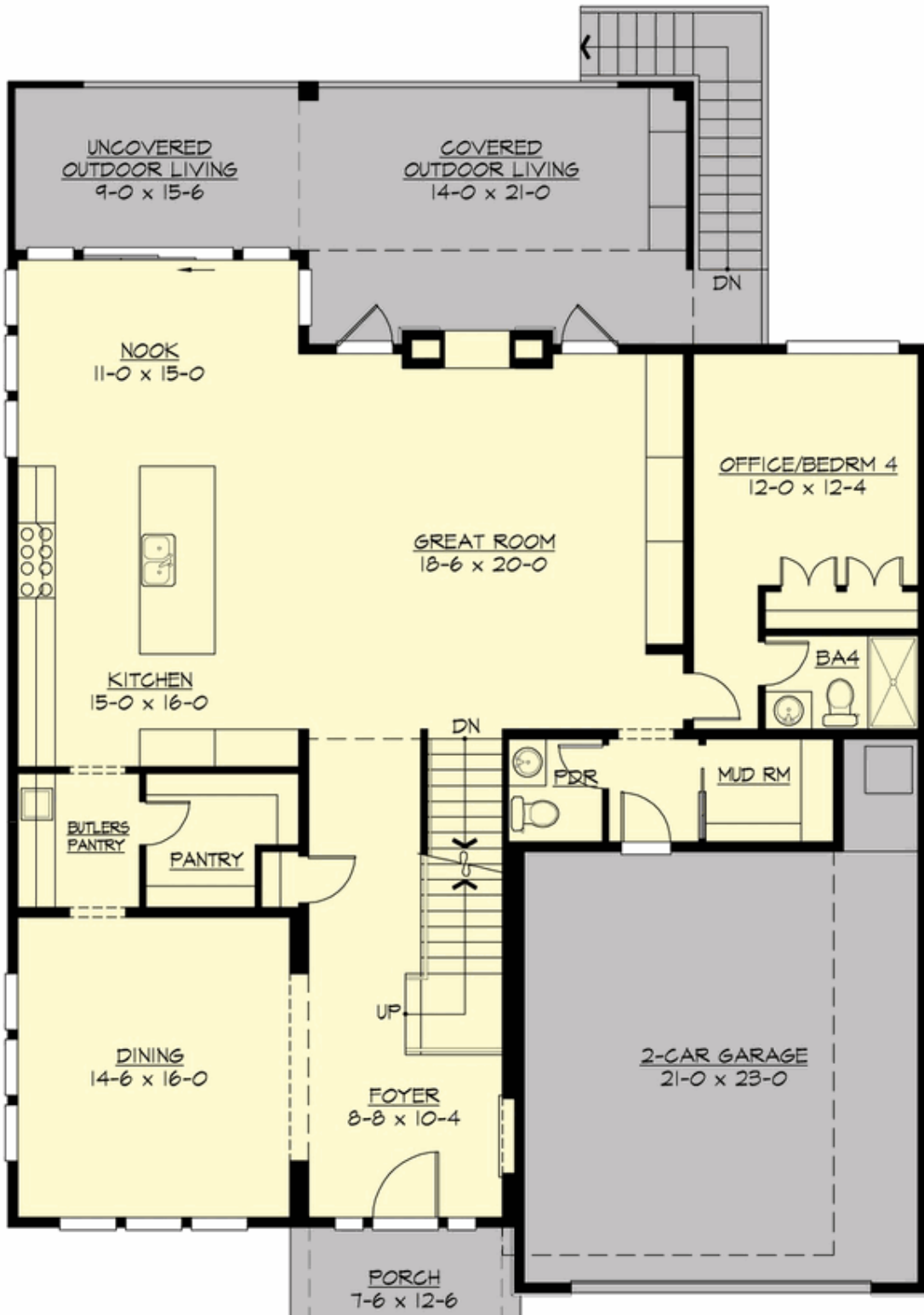
CASSIDY - PLAN M3416A2F-0DB

Total Area: 5369 sq. ft.
Garage Area: 534 sq. ft.
Garage Area: 534 sq. ft.
Garage Size: 2
Stories: 3
Bedrooms: 5
Full Baths: 5
Half Baths: 1
Width: 49'-0"
Depth: 68'-6"
Height: 24'-7"
Foundation: Daylight Basement

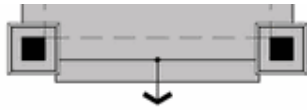


CASSIDY - PLAN M3416A2F-0DB

MAIN FLOOR

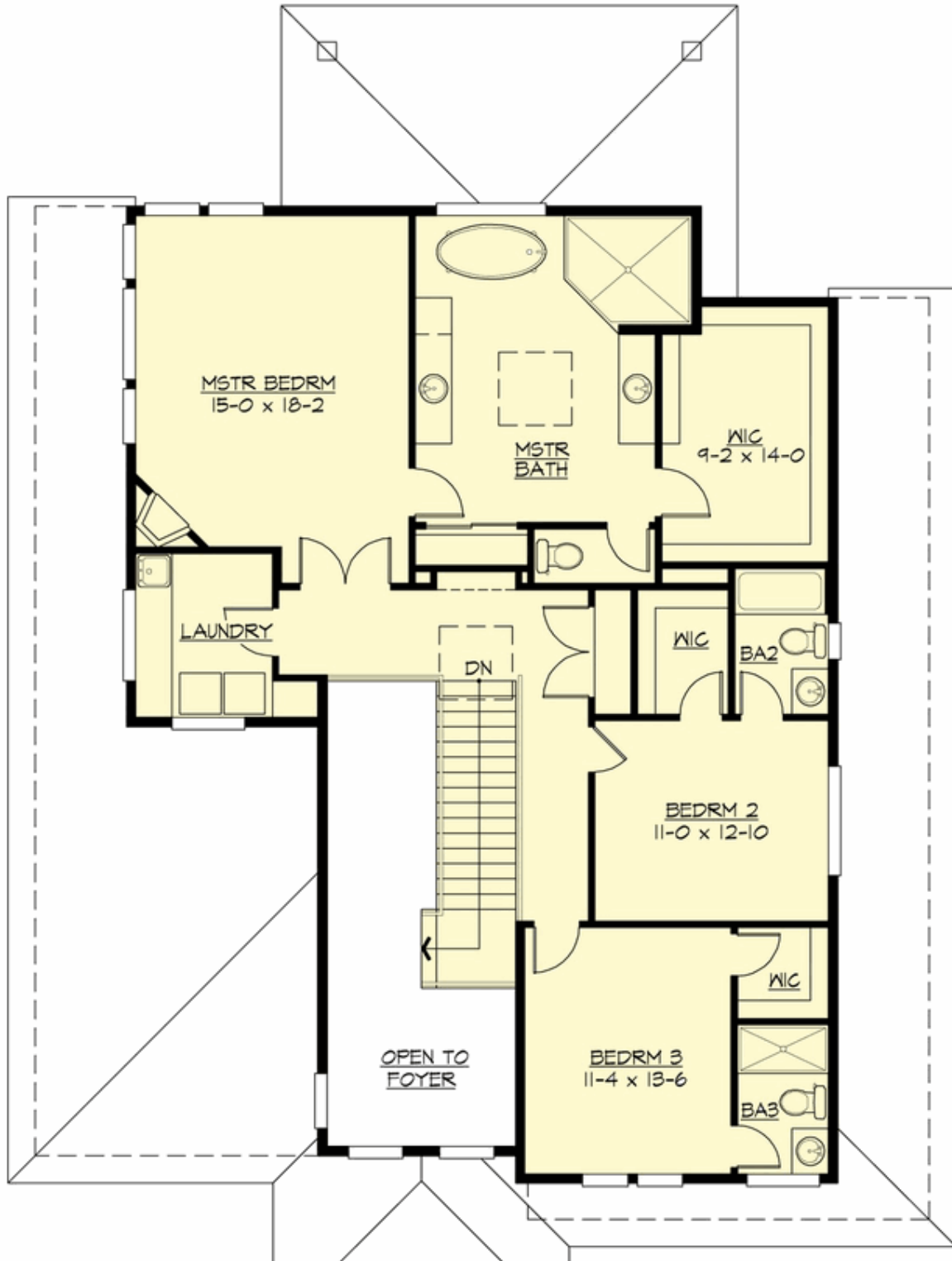


COPYRIGHT NOTICE: It is illegal to build this plan without a legally obtained set of prints. It is illegal to copy or redraw these plans. Violation of U.S. Copyright Laws are punishable with fines up to \$150,000. After the purchase of plans, changes may be made by a qualified professional.



CASSIDY - PLAN M3416A2F-0DB

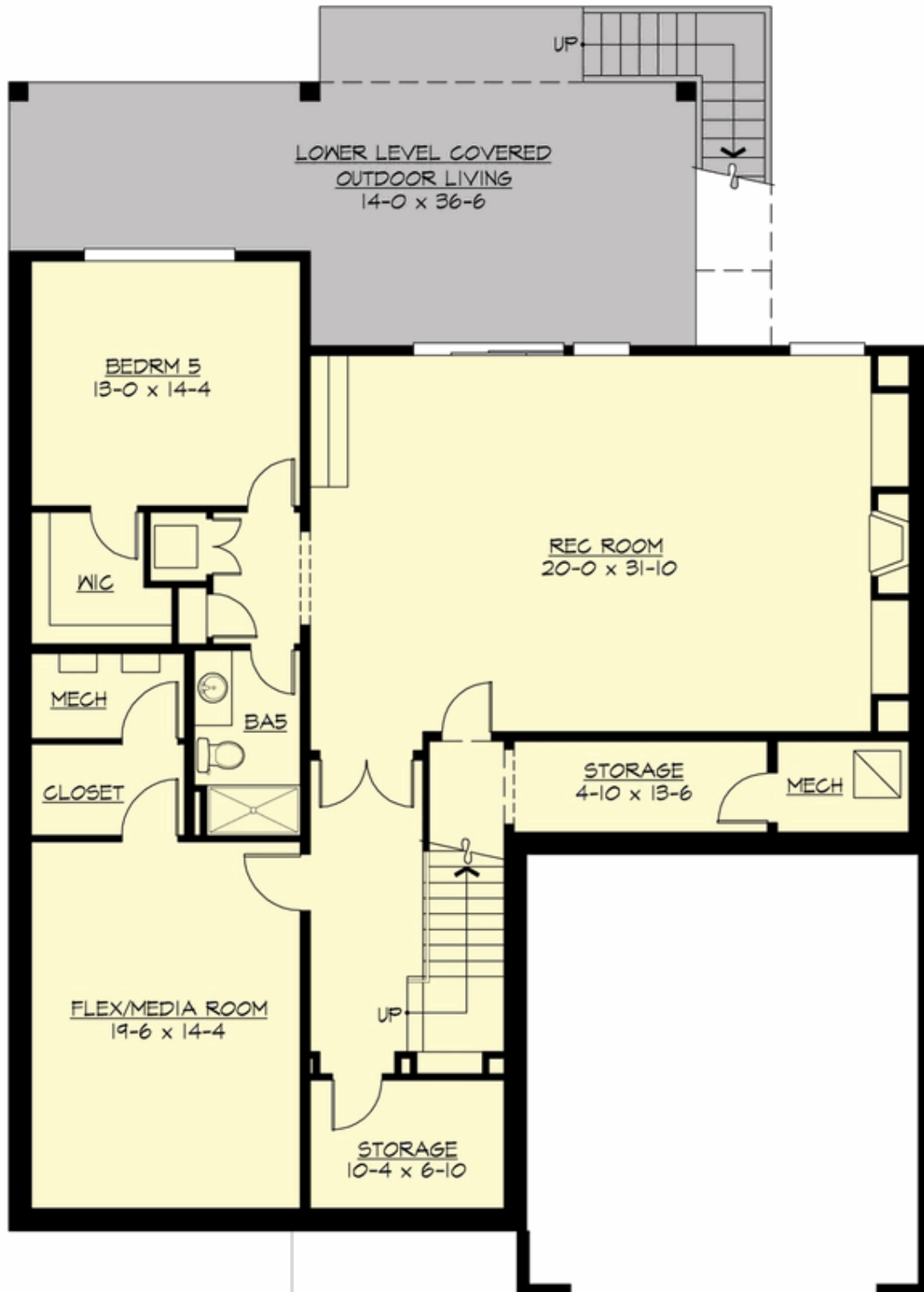
UPPER FLOOR





CASSIDY - PLAN M3416A2F-0DB

LOWER FLOOR







CASSIDY - PLAN M3416A2F-0DB

PLAN DETAILS

Area Summary

Total Area:	5369 sq. ft.
Main Floor:	1926 sq. ft.
Upper Floor:	1490 sq. ft.
Lower Floor:	1953 sq. ft.
Garage Floor:	534 sq. ft.

General Information

Stories:	3
Width:	49'-0"
Depth:	68'-6"
Height:	24'-7"

Architectural Style

Contemporary
Modern
Prairie

Number of Rooms

Bedrooms:	5
Full Baths:	5
Half Baths:	1

Garage

Garage Size:	2
Garage Door Location:	Front

Roof Pitches

Primary:	3:12
Secondary:	0:12

Wall Heights

Main:	10'-0"
Upper:	9'-0"
3rd Floor:	0'-0"
Lower:	9'-0"

Foundation Type

Daylight Basement

Roof Framing

Trusses

Floor Load

Live (lbs):	40 PSF
Dead (lbs):	10 PSF

Roof Load

Live (lbs):	25 PSF
Dead (lbs):	15 PSF
Wind:	85 MPH

Design Features

- Bonus Space @ Lower Floor
- Front and Rear Porch
- Great Room
- Laundry Room @ Upper & Lower Floor
- Master Bedroom @ Upper Floor Rear
- View Lot - Rear