



## BARRETT - PLAN M5258A2RTU-0DB

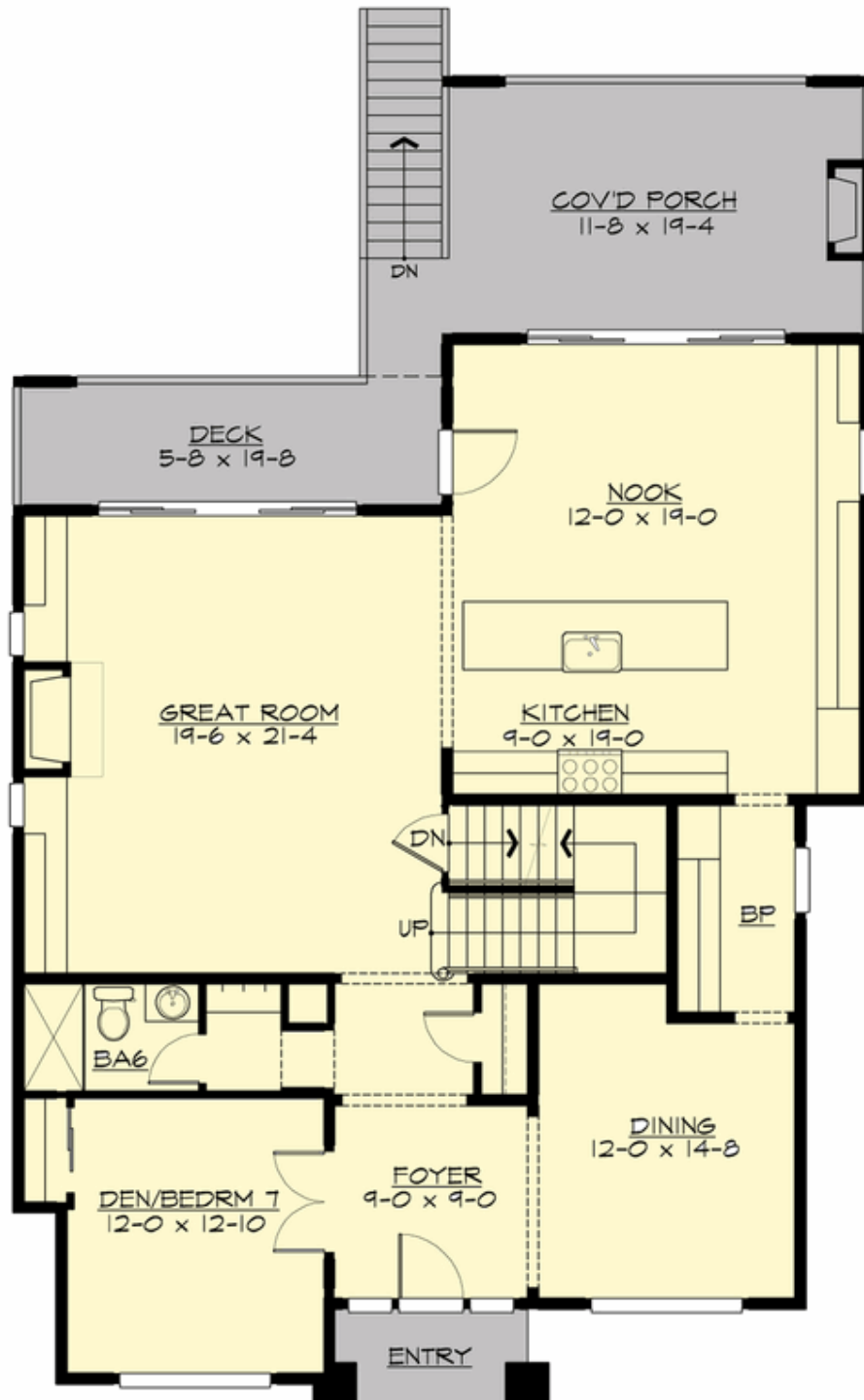
Total Area: 5258 sq. ft.  
Garage Area: 563 sq. ft.  
Garage Area: 563 sq. ft.  
Garage Size: 2  
Stories: 3  
Bedrooms: 7  
Full Baths: 7  
Width: 40'-0"  
Depth: 65'-0"  
Height: 31'-10"  
Foundation: Daylight Basement



**Please Allow 2 Weeks For Delivery**

**BARRETT - PLAN M5258A2RTU-0DB**

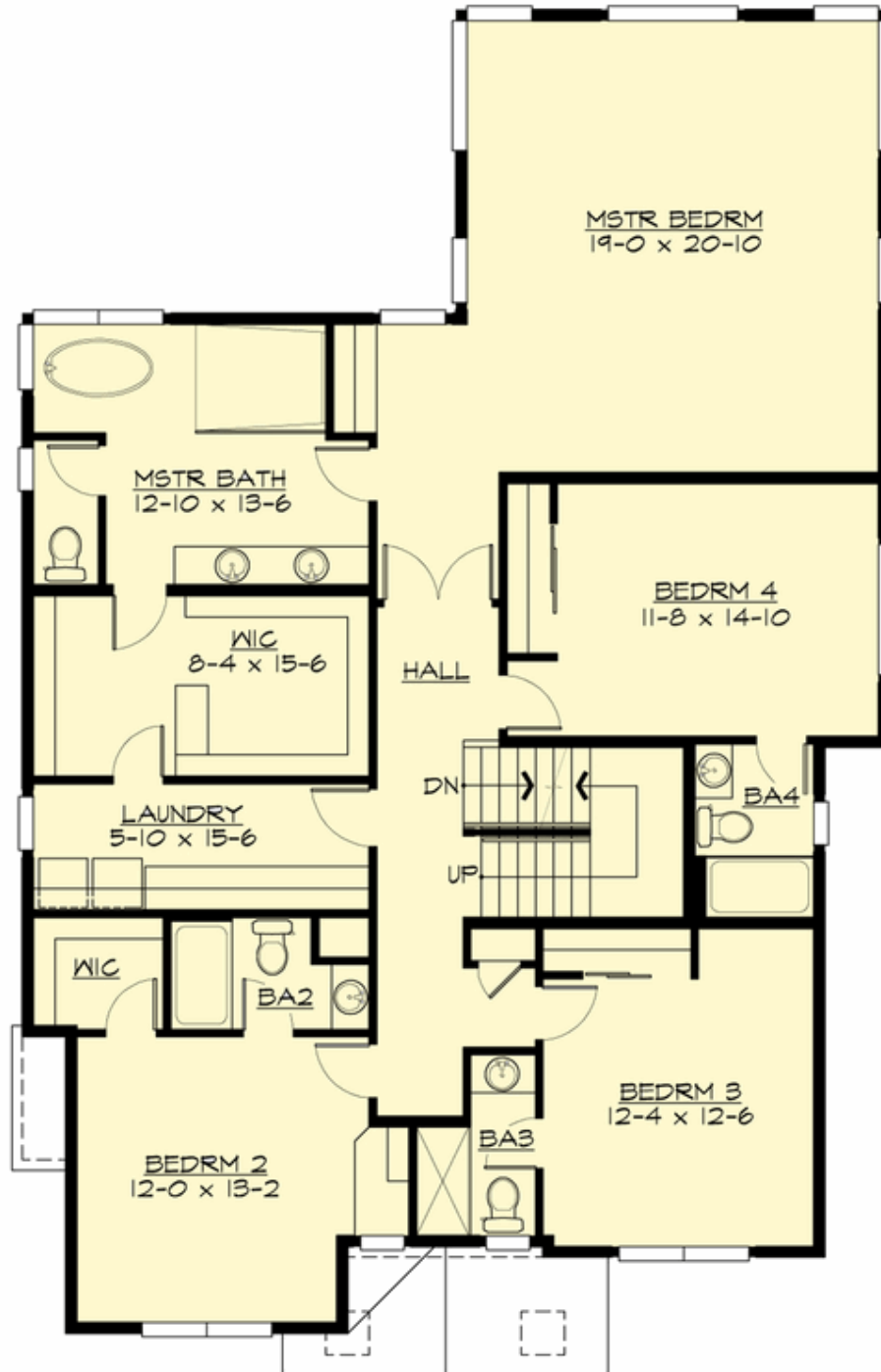
**MAIN FLOOR**





**BARRETT - PLAN M5258A2RTU-0DB**

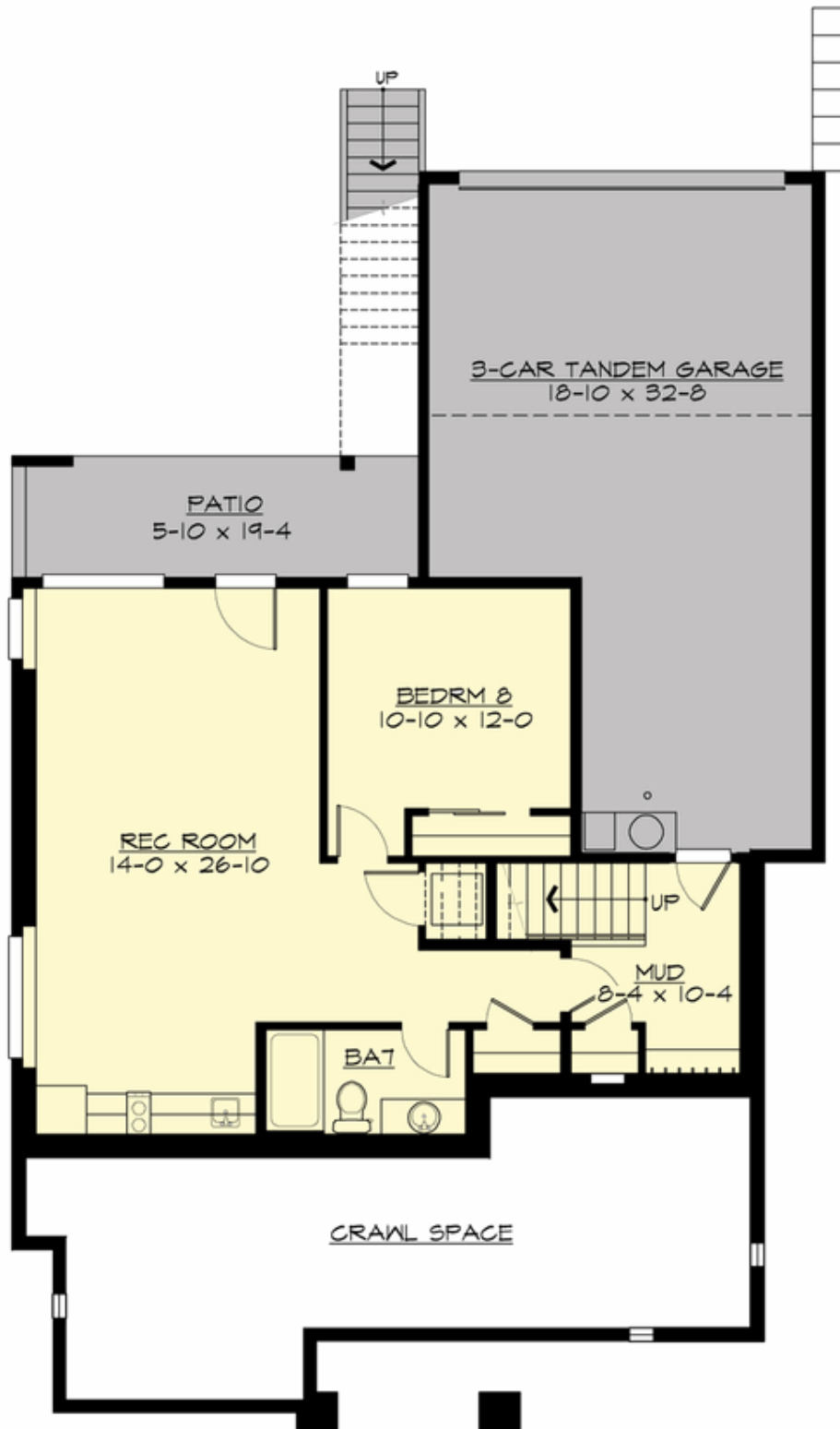
**UPPER FLOOR**





**BARRETT - PLAN M5258A2RTU-0DB**

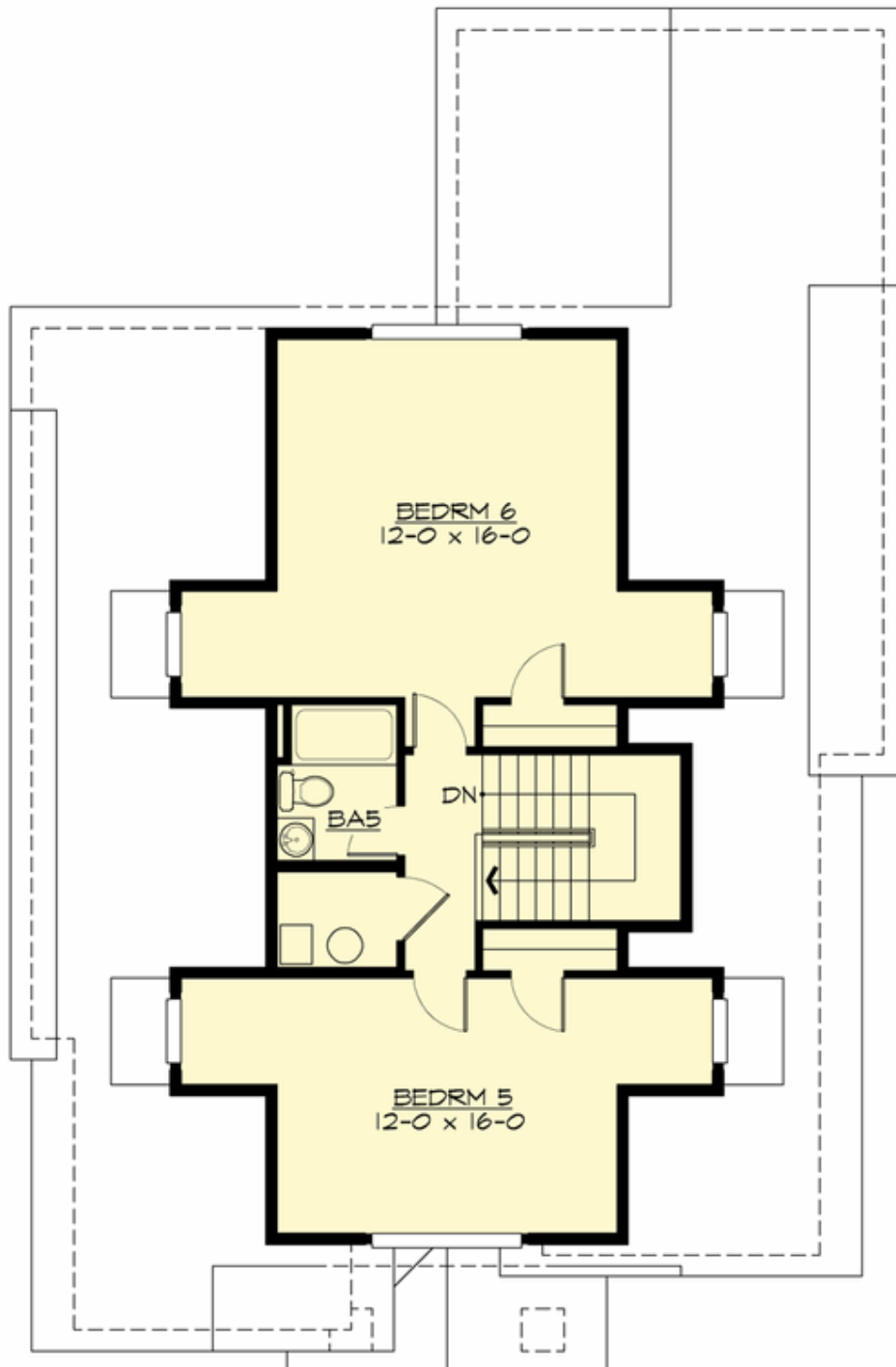
**LOWER FLOOR**





**BARRETT - PLAN M5258A2RTU-0DB**

**THIRD FLOOR**









## BARRETT - PLAN M5258A2RTU-0DB

### PLAN DETAILS

#### Area Summary

Total Area:	5258 sq. ft.
Main Floor:	1626 sq. ft.
Upper Floor:	1975 sq. ft.
3rd Floor:	764 sq. ft.
Lower Floor:	893 sq. ft.
Garage Floor:	563 sq. ft.

#### General Information

Stories:	3
Width:	40'-0"
Depth:	65'-0"
Height:	31'-10"

#### Architectural Style

Craftsman  
Northwest  
Shingle

#### Number of Rooms

Bedrooms:	7
Full Baths:	7

#### Garage

Garage Size:	2
Garage Door Location:	Rear
Garage Type:	Under

#### Roof Pitches

Primary:	7:12
Secondary:	4:12

#### Wall Heights

Main:	10'-0"
Upper:	9'-0"
3rd Floor:	8'-0"
Lower:	9'-0"

#### Foundation Type

Daylight Basement

#### Roof Framing

Combination

#### Floor Load

Live (lbs):	40 PSF
Dead (lbs):	10 PSF

#### Roof Load

Live (lbs):	25 PSF
Dead (lbs):	15 PSF
Wind:	85 MPH

#### Design Features

- Bonus Space @ Lower Floor
- Den/Office
- Front and Rear Porch
- Great Room
- Laundry Room @ Upper Floor
- Master Bedroom @ Upper Floor Rear
- Narrow Lot
- View Lot - Rear