



## MACKINLEY - PLAN M3871A4FT-0DB

Total Area: 5602 sq. ft.  
Garage Area: 953 sq. ft.  
Garage Area: 953 sq. ft.  
Garage Size: 4  
Stories: 3  
Bedrooms: 5  
Full Baths: 4  
Half Baths: 1  
Width: 65'-6"  
Depth: 64'-0"  
Height: 32'-0"  
Foundation: Daylight Basement



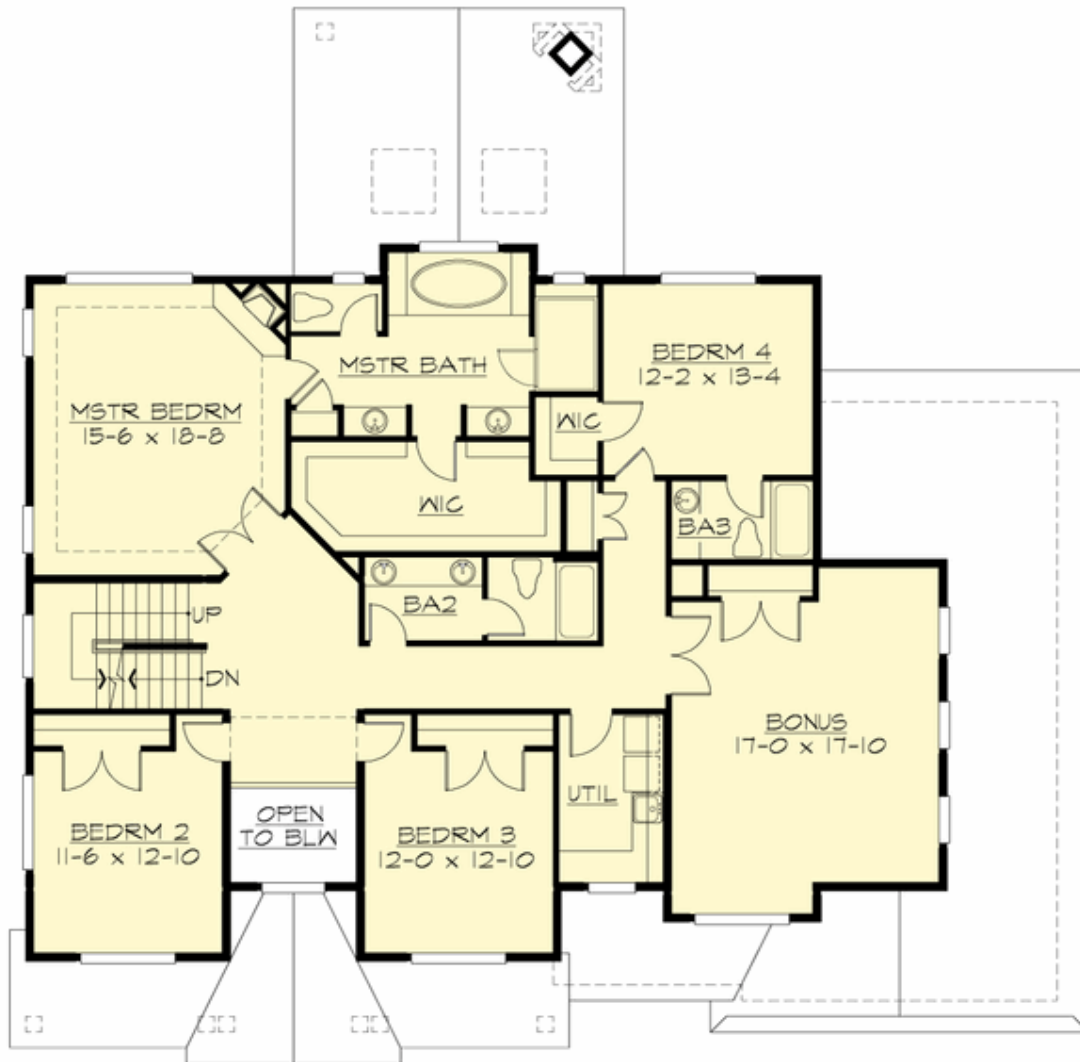
## MACKINLEY - PLAN M3871A4FT-0DB

### MAIN FLOOR



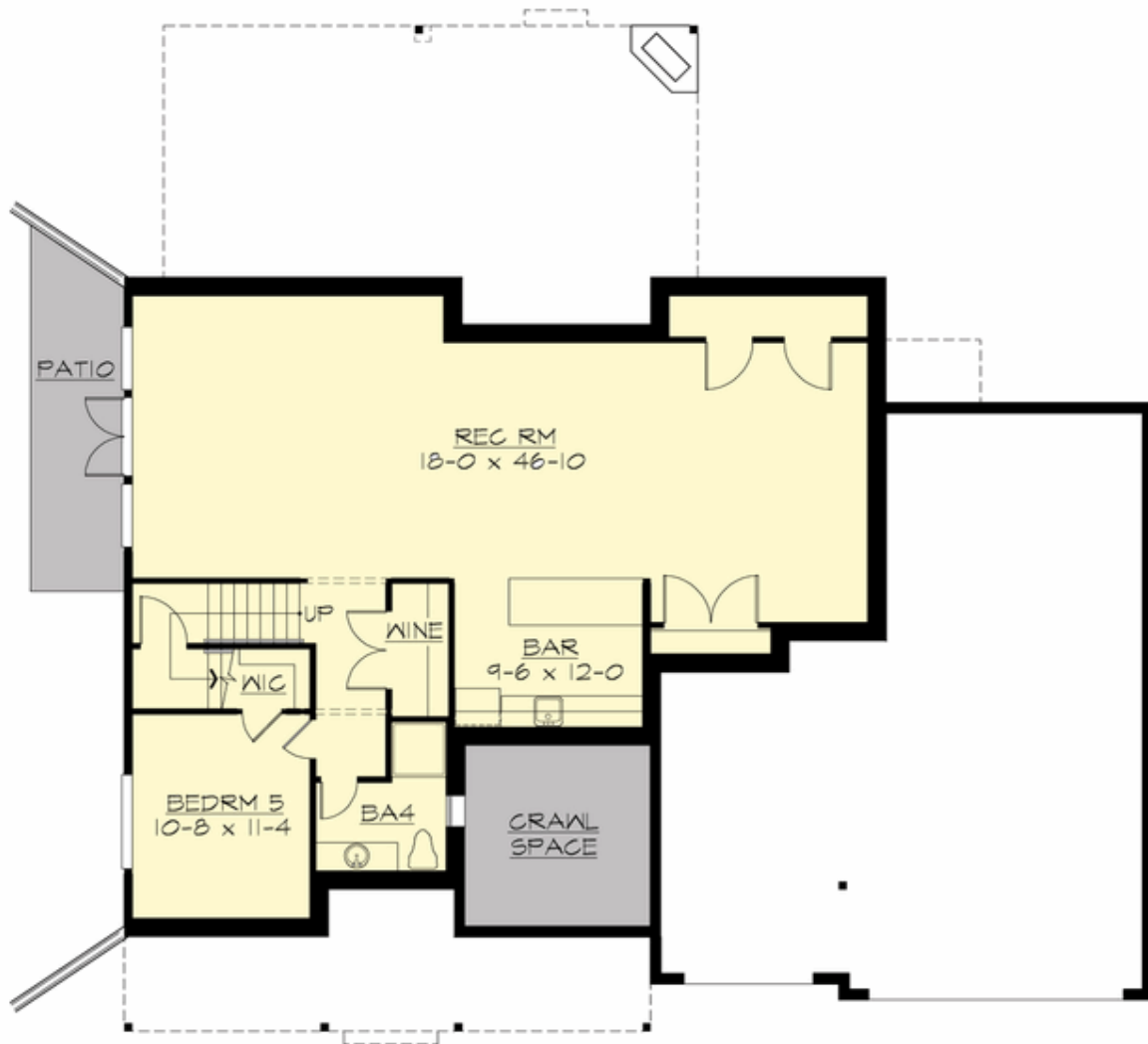
## MACKINLEY - PLAN M3871A4FT-0DB

### UPPER FLOOR



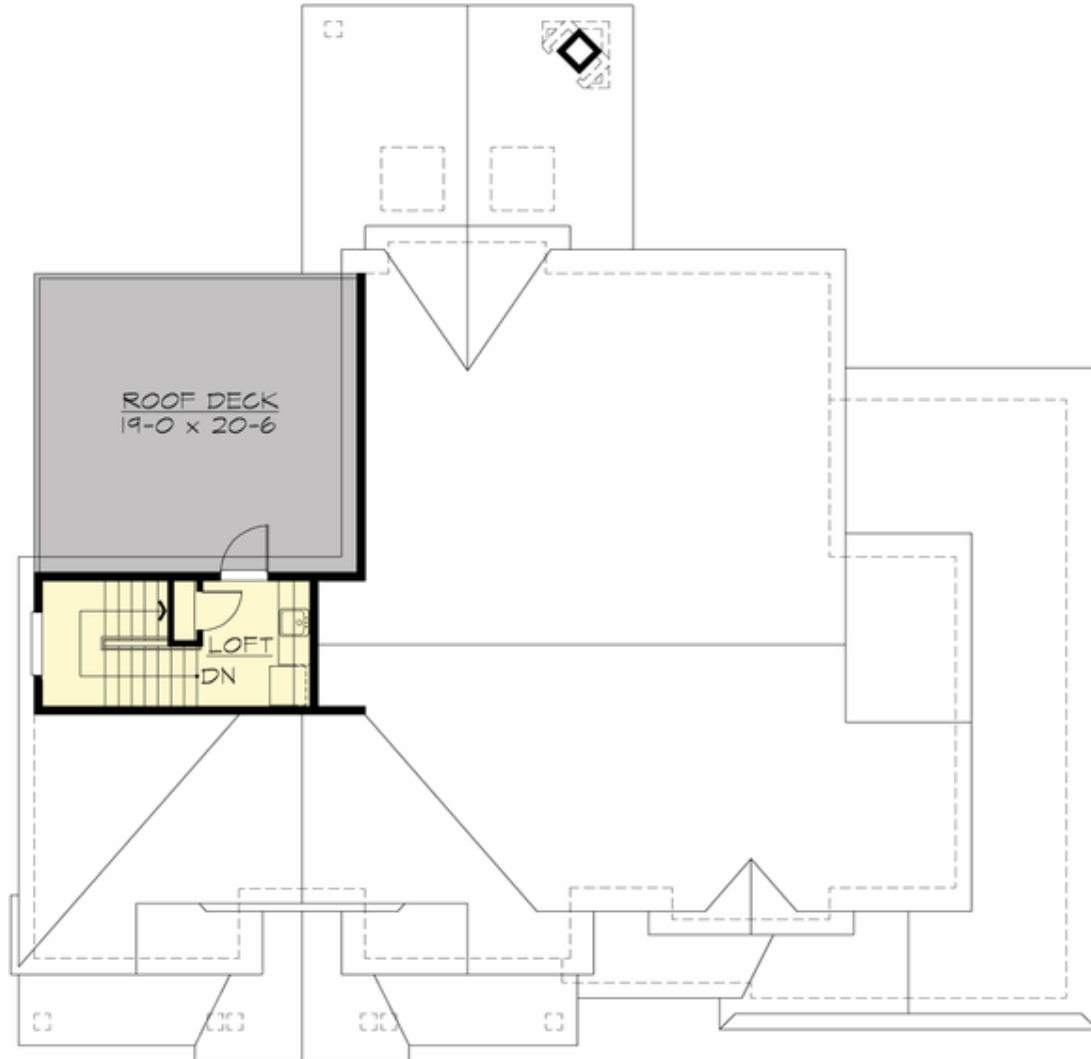
**MACKINLEY - PLAN M3871A4FT-0DB**

**LOWER FLOOR**



**MACKINLEY - PLAN M3871A4FT-0DB**

**THIRD FLOOR**





## MACKINLEY - PLAN M3871A4FT-0DB

### PLAN DETAILS

#### Area Summary

Total Area:	5602 sq. ft.
Main Floor:	1718 sq. ft.
Upper Floor:	2153 sq. ft.
3rd Floor:	162 sq. ft.
Lower Floor:	1569 sq. ft.
Garage Floor:	953 sq. ft.

#### General Information

Stories:	3
Width:	65'-6"
Depth:	64'-0"
Height:	32'-0"

#### Architectural Style

Craftsman  
Northwest  
Shingle

#### Number of Rooms

Bedrooms:	5
Full Baths:	4
Half Baths:	1

#### Garage

Garage Size:	4
Garage Door Location:	Front
Garage Type:	Tandem

#### Roof Pitches

Primary:	8:12
Secondary:	4:12

#### Wall Heights

Main:	10'-0"
Upper:	9'-0"
3rd Floor:	7'-0"
Lower:	9'-0"

#### Foundation Type

Daylight Basement

#### Roof Framing

Trusses

#### Floor Load

Live (lbs):	40 PSF
Dead (lbs):	10 PSF

#### Roof Load

Live (lbs):	25 PSF
Dead (lbs):	15 PSF
Wind:	85 MPH

#### Design Features

- Bonus Space @ Upper Floor & Lower Floor
- Den/Office
- Front and Rear Porch
- Great Room
- Laundry Room @ Upper Floor
- Master Bedroom @ Upper Floor Rear
- View Lot - Rear